

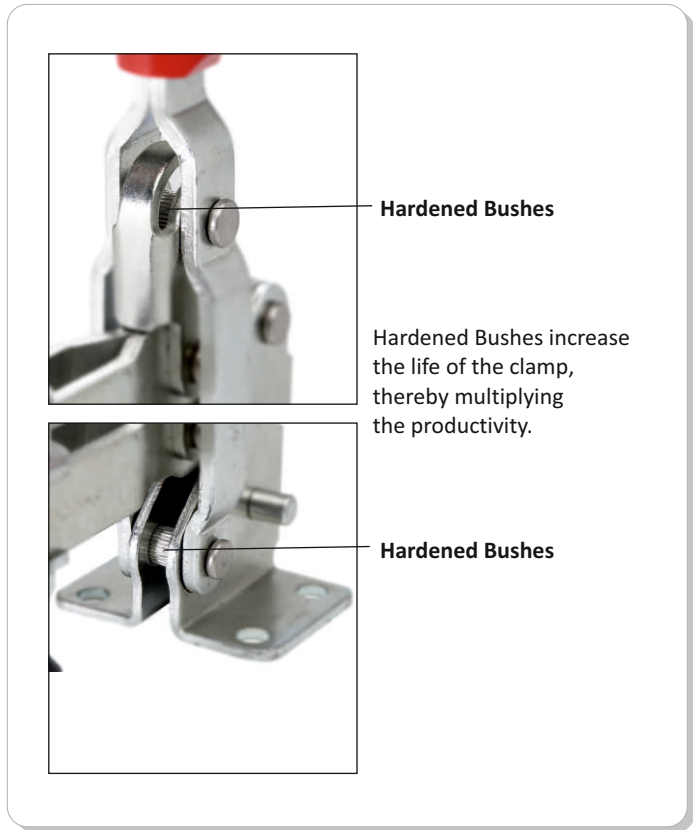
## Vertical Hold Down Action - International Range

The all new international equivalent range of toggle clamps from Steel-Smith. Now all the leading international toggle clamps have their equivalents in this range. What's more, these quality clamps come with hardened bushes for enhanced life, several safety features and slicker finish.



'Safety Cover' on the clamp link

*This feature protects the user's finger from accidentally entering the clamp linking and getting injured during clamping operations.*



Hardened Bushes

Hardened Bushes increase the life of the clamp, thereby multiplying the productivity.

Hardened Bushes

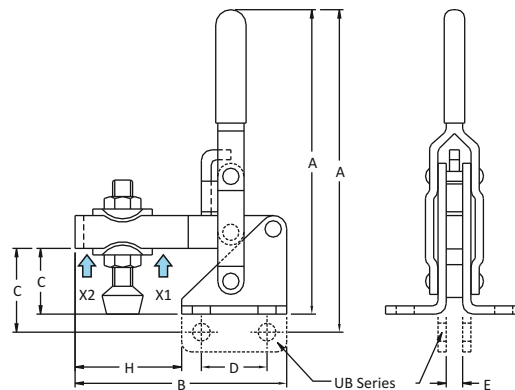
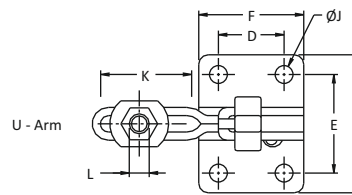
## Vertical Hold Down Action VTC - 201 Series



Model No. VTC-201-U



Model No. VTC-201-UB



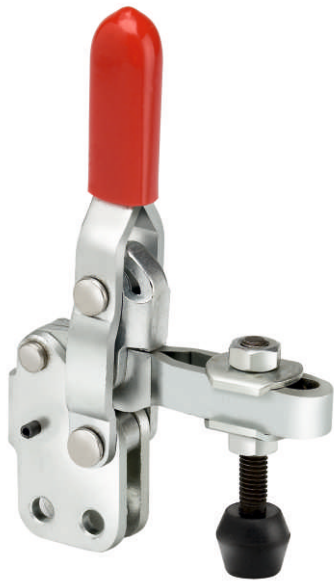
Also Available  
in Stainless Steel  
VTC-201-U-SS  
VTC-201-UB-SS

Model No.	Arm Type	Base Type
VTC-201-U	Adjustable Arm	Flanged
VTC-201-UB	Adjustable Arm	Straight

Model No.	Holding Capacity		Weight Kgs	Handle Moves	Bar Opens	Dimensions										
	X2	X1				A	B	C	D	E	F	G	H	J	K	L
VTC-201-U	0.24 kN	0.50 kN	0.090	60°	110°	83.3	50.7	16.0	16.0	23.9	25.0	33.0	25.5	4.4	18.3	M5 Bolt
VTC-201-UB	0.24 kN	0.50 kN	0.090	60°	110°	91.0	50.7	21.5	16.0	4.0	25.0	—	25.5	4.4	18.3	M5 Bolt

## Vertical Hold Down Action VTC - 202 Series

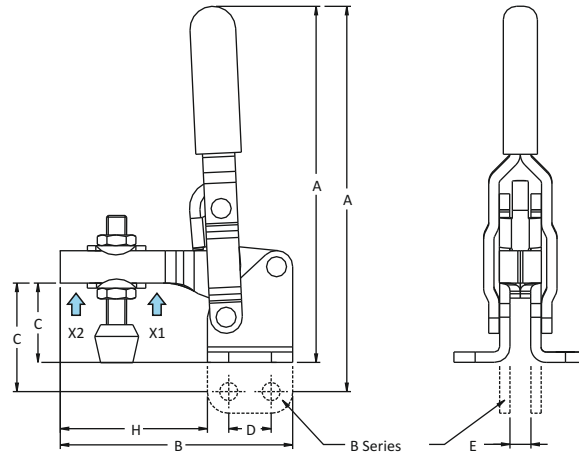
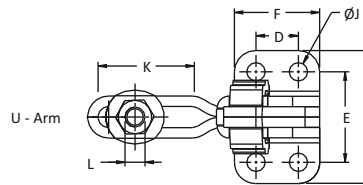
Vertical Hold Down Action



Model No. VTC-202-UB



Model No. VTC-202-U



Also Available  
in Stainless Steel  
VTC-202-U-SS  
VTC-202-UB-SS

Model No.	Arm Type	Base Type
VTC-202-U	Adjustable Arm	Flanged
VTC-202-UB	Adjustable Arm	Straight
VTC-202-UL	Adjustable Arm	Flanged

Model No.	Holding Capacity		Weight Kgs	Handle Moves	Bar Opens	Dimensions										
	X2	X1				A	B	C	D	E	F	G	H	J	K	L
VTC-202-U	0.62 kN	1.00 kN	0.160	64°	104°	106.0	75.2	23.9	12.7	26.9	25.5	39.3	45.8	5.5	25.4	M6 Bolt
VTC-202-UB	0.62 kN	1.00 kN	0.160	64°	104°	115.0	75.2	28.3	12.7	6.0	25.5	-	45.8	5.5	25.4	M6 Bolt
VTC-202-UL	0.62 kN	1.00 kN	0.160	64°	104°	106.0	86.0	23.9	12.7	26.9	25.5	39.3	60.5	5.5	40.0	M6 Bolt

## Vertical Hold Down Action VTC - 207 Series

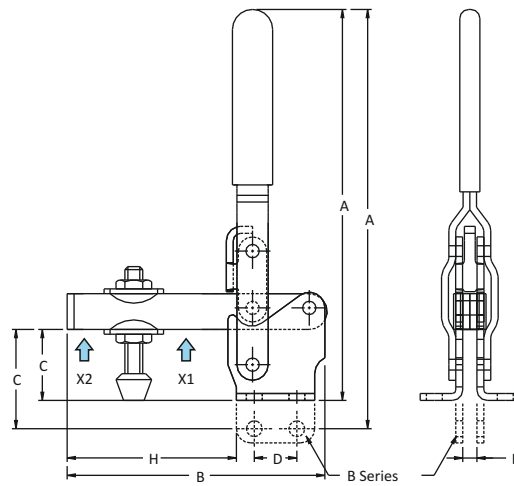
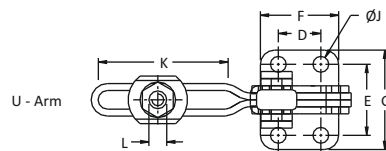
Vertical Hold Down Action



Model No. VTC-207-UB



Model No. VTC-207-U



Also Available  
in Stainless Steel  
VTC-207-U-SS  
VTC-207-UB-SS

Model No.	Arm Type	Base Type
VTC-207-U	Adjustable Arm	Flanged
VTC-207-UB	Adjustable Arm	Straight
VTC-207-UL	Adjustable Arm	Flanged
VTC-207-ULB	Adjustable Arm	Straight

Model No.	Holding Capacity		Weight Kgs	Handle Moves	Bar Opens	Dimensions										
	X2	X1				A	B	C	D	E	F	G	H	J	K	L
VTC-207-U	1.00 kN	1.70 kN	0.300	62°	115°	174.0	100.0	31.0	19.1	31.8	35.1	44.6	57.5	7.1	32.0	M8 Bolt
VTC-207-UB	1.00 kN	1.70 kN	0.300	62°	115°	189.0	100.0	40.0	19.1	6.0	35.1	-	57.5	7.1	32.0	M8 Bolt
VTC-207-UL	0.70 kN	1.50 kN	0.340	62°	115°	174.0	146.5	31.0	19.1	31.8	35.1	44.6	104.0	7.1	78.5	M8 Bolt
VTC-207-ULB	0.70 kN	1.50 kN	0.340	62°	115°	189.0	146.5	40.0	19.1	6.0	35.1	-	104.0	7.1	78.5	M8 Bolt

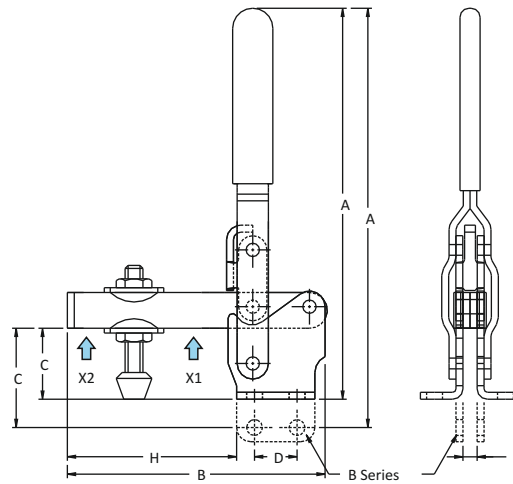
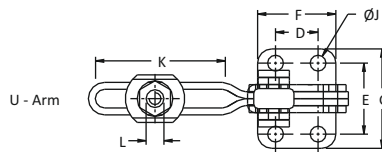
## Vertical Hold Down Action VTC - 210 Series



Model No. VTC-210-U



Model No. VTC-210-UB



Also Available  
in Stainless Steel  
VTC-210-U-SS  
VTC-210-UB-SS

Model No.	Arm Type	Base Type
VTC-210-U	Adjustable Arm	Flanged
VTC-210-UB	Adjustable Arm	Straight

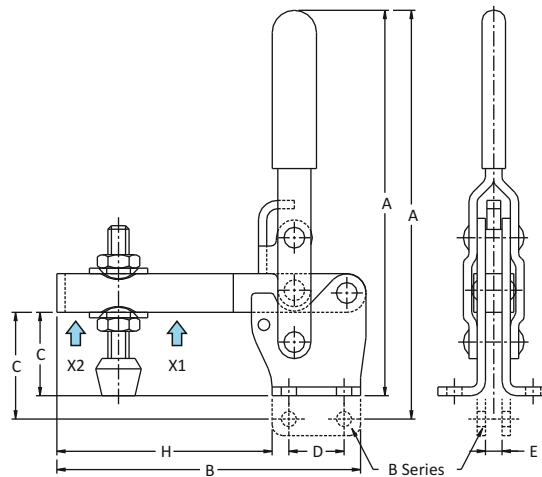
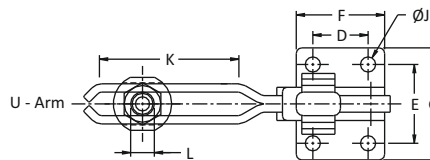
Model No.	HoldingCapacity		Weight Kgs	Handle Moves	Bar Opens	Dimensions										
	X2	X1				A	B	C	D	E	F	G	H	J	K	L
VTC-210-U	1.40 kN	2.70 kN	0.590	58°	106°	195.0	144.0	42.0	31.8	45.2	48.6	64.4	91.0	8.3	60.0	M10 Bolt
VTC-210-UB	1.40 kN	2.70 kN	0.590	58°	106°	219.0	144.0	56.5	31.8	8.0	48.6	—	90.0	8.3	60.0	M10 Bolt

## Vertical Hold Down Action VTC - 247 Series

Vertical Hold Down Action



Model No. VTC-247-U



Model No.	Arm Type	Base Type
VTC-247-U	Adjustable Arm	Flanged
VTC-247-UB	Adjustable Arm	Straight

Model No.	Holding Capacity		Weight Kgs	Handle Moves	Bar Opens	Dimensions										
	X2	X1				A	B	C	D	E	F	G	H	J	K	L
VTC-247-U	2.00 kN	4.40 kN	1.280	75°	136°	220.0	177.0	50.8	31.8	45.0	50.8	60.0	124.0	8.6	71.4	M12 Bolt
VTC-247-UB	2.00 kN	4.40 kN	1.100	75°	136°	245.0	177.0	61.0	31.8	10.0	50.8	—	124.0	8.6	71.4	M12 Bolt