

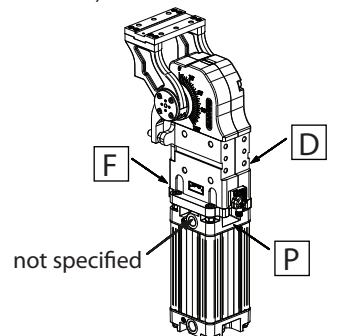
LAGP063

Pneumatic power pivot



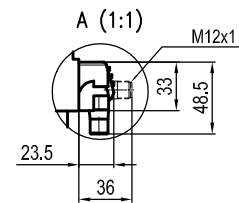
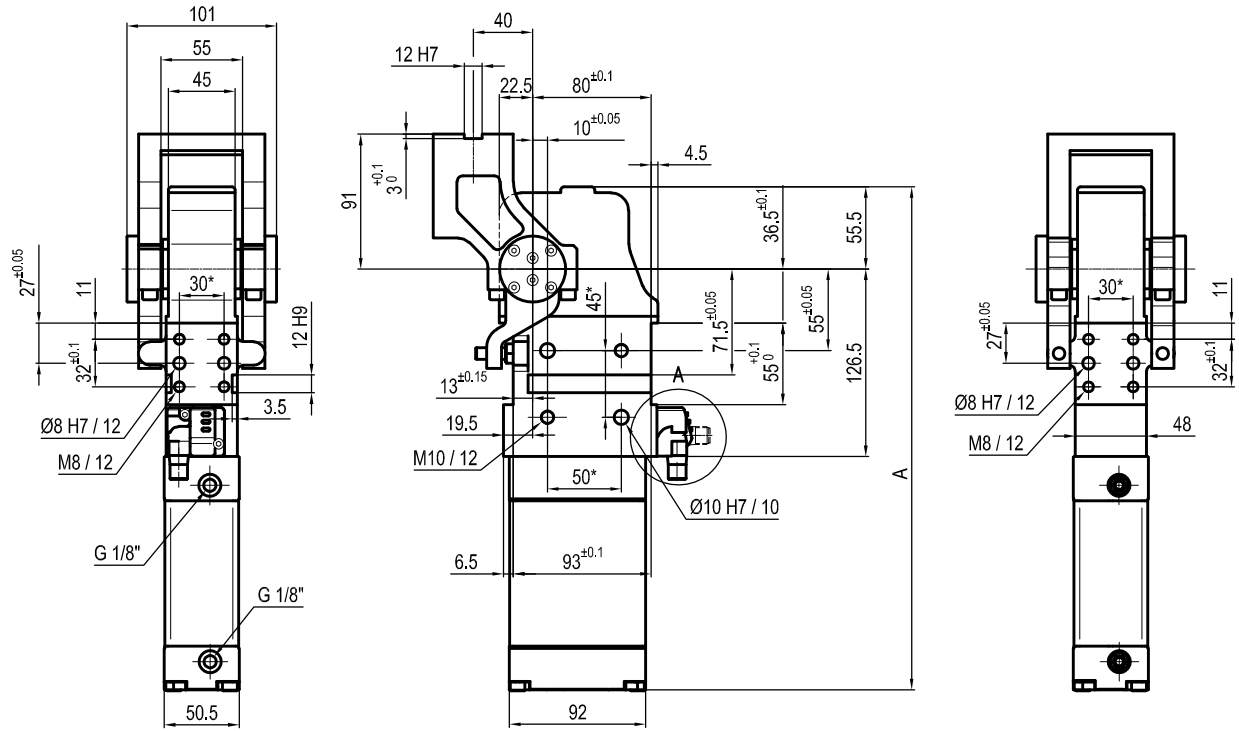
L	A	G	P	0	6	3	V	U	0	9	0	W	
1			2		3		4		5		6		7

1 Series LAG = Power pivot with predeterminate pivot rotation angles	2 Version P = Pneumatic-standard	3 Size 063 = Ø 63 mm cylinder
4 Table position V = Vertical 180° O = Horizontal 90° Z = Vertical, mirror of V position P = Horizontal, mirror of O position (Max opening angle 60°)	5 Sensor E = Electronic sensor with M12 swivel connector (DF-U) A = Electronic sensor with M12 swivel connector + additional brake sensor (2x DF-U)	6 Pivot rotation angles 120 = 120° 090 = 90° 060 = 60° 045 = 45°
7 Brake system W = Without brake	8 Valve C = Integrated valve for cycle time optimization	9 Connections D = Right side (sensor right side) F = Front side (in front of the sensor) P = Rear side (same side as sensor) If not specified, on the left side (sensor left side)

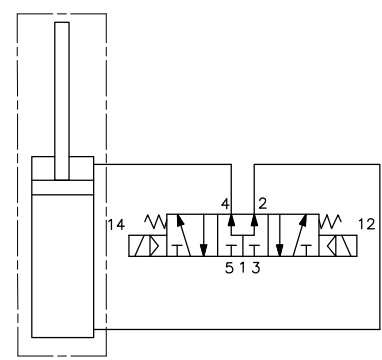
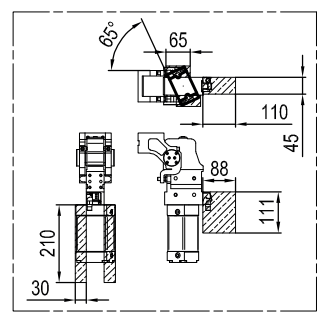
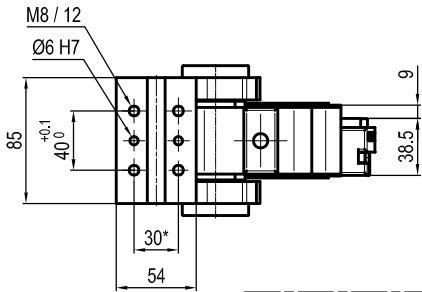


UNIVER SpA recommends that all power pivot applications are validated by UNIVER technical department

LAGP063OU__W



Passive brake



Pivot rotation in degrees	A
45°	303.5
60°	310.5
90°	325.5
120°	339.5

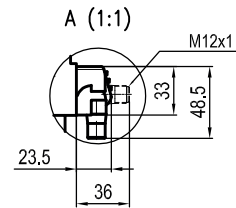
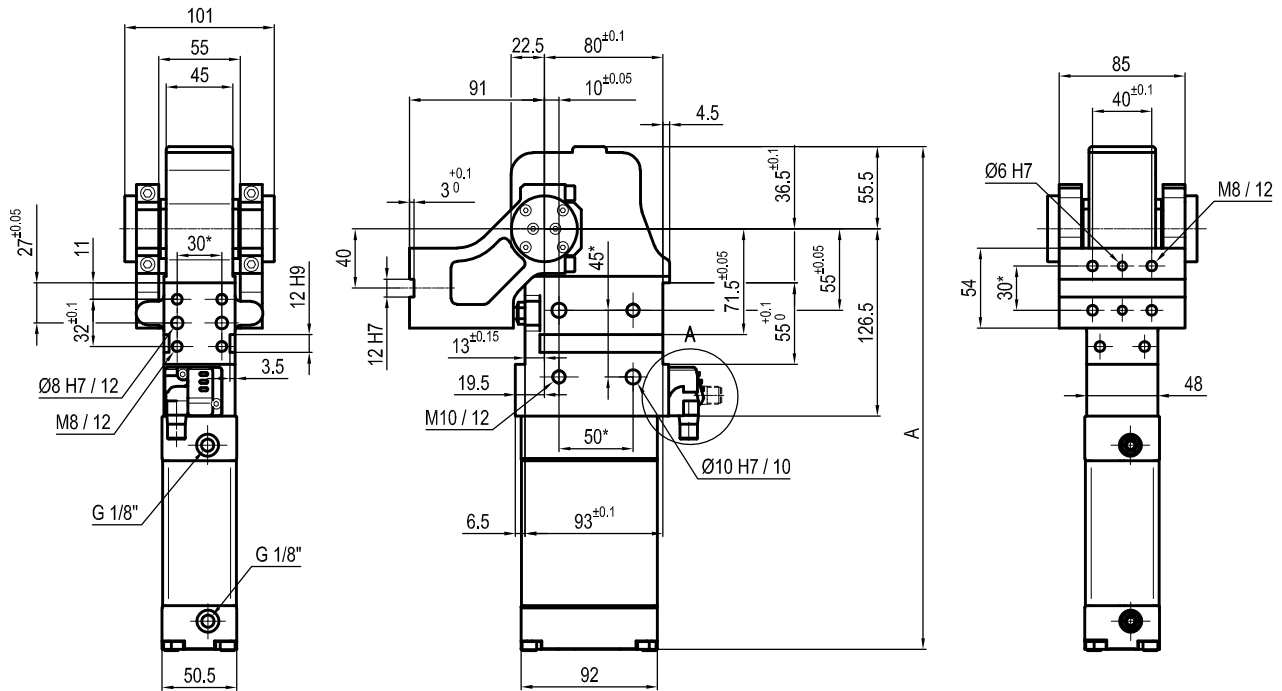
Size	Holding moment	Max. torque at the rotary table 0,55 MPa	Weight
63	1750 Nm	11 Nm	5,1 Kg

Min./Max. operating pressure: **0,4 / 0,6 MPa**
 Operating temperature: **5° ÷ 45° C**
 Predetermine pivot rotation in degrees: **45°- 60°- 90°- 120°**
 Rotary table position: **Horizontal 90°**
 Electronic sensor with M12 swivel connector, (from 0° or 90°)
 Supply voltage: 10 ÷ 30 Vdc
 IP code: **IP 65**

*: TOLERANCE BETWEEN DOWEL HOLES ± 0,02, BETWEEN SCREW HOLES ± 0,1

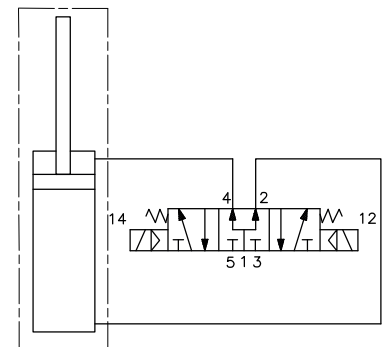
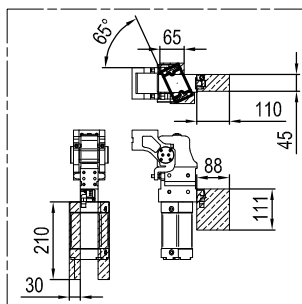
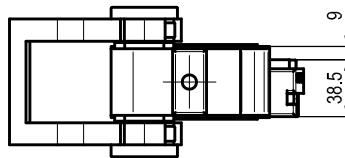
Subject to technical modifications without notice

LAGP063VU__W



Passive brake

Pivot rotation in degrees	A
45°	303.5
60°	310.5
90°	325.5
120°	339.5



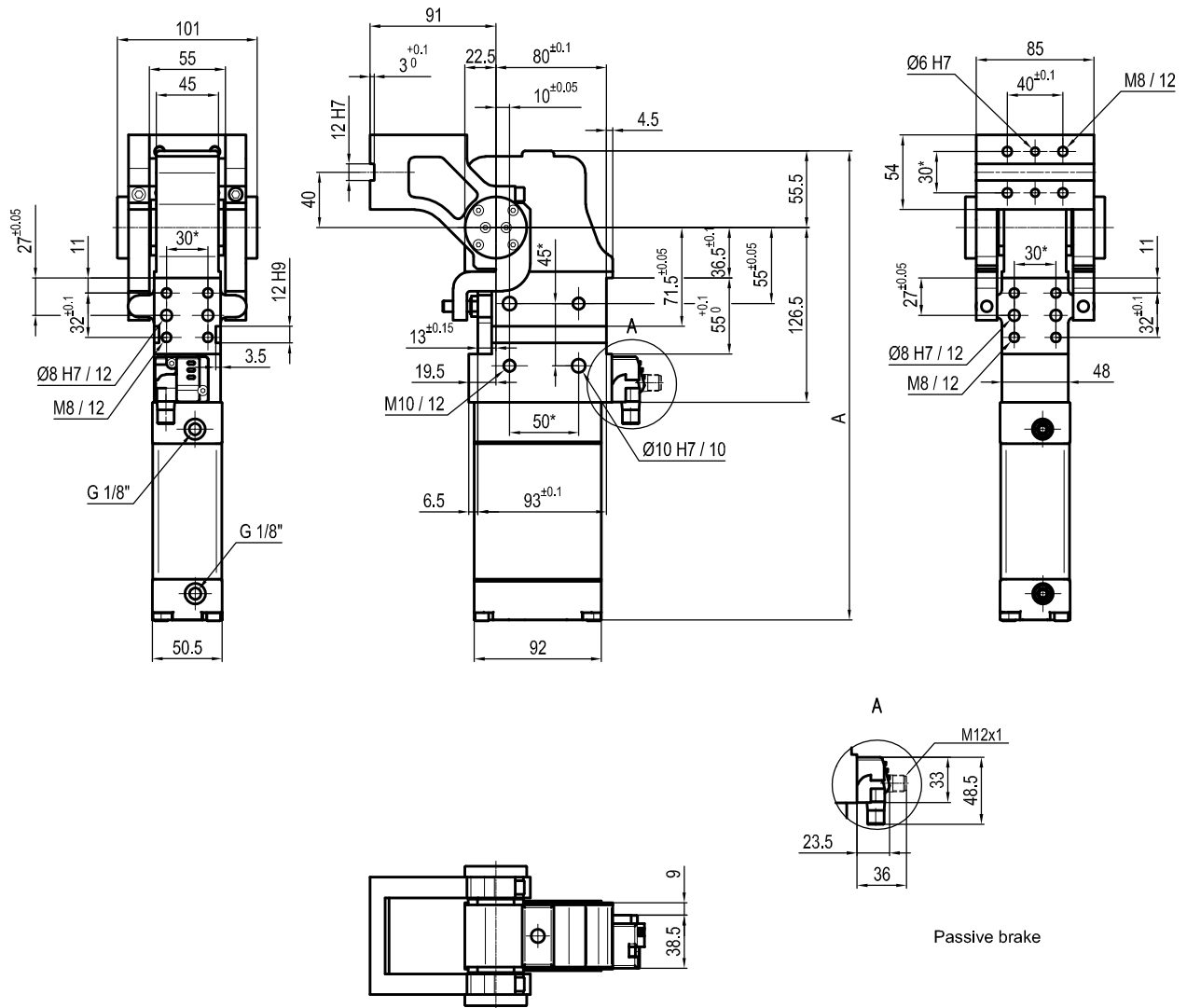
Size	Holding moment	Max. torque at the rotary table 0,55 MPa	Weight
63	1750 Nm	11 Nm	5,1 Kg

Min./Max. operating pressure: **0,4 / 0,6 MPa**
 Operating temperature: **5° ÷ 45° C**
 Predetermine pivot rotation in degrees: **45°- 60°-90°-120°**
 Rotary table position: **Horizontal 90°**
 Electronic sensor with M12 swivel connector (from 0° or 90°)
 Supply voltage: 10 ÷ 30 Vdc
 IP code: **IP 65**

*: TOLERANCE BETWEEN DOWEL HOLES ± 0,02, BETWEEN SCREW HOLES ± 0,1

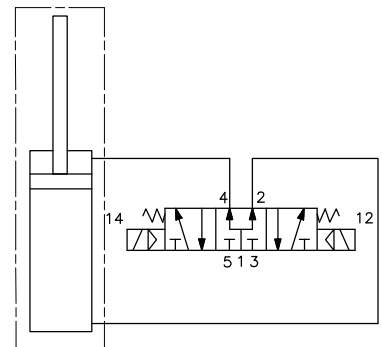
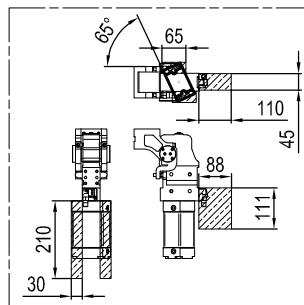
Subject to technical modifications without notice

LAGP063ZU__W



Passive brake

Pivot rotation in degrees	A
45°	303.5
60°	310.5
90°	325.5
120°	339.5



Size	Holding moment	Max. torque at the rotary table 0,55 MPa	Weight
63	1750 Nm	11 Nm	5,1 Kg

Min./Max. operating pressure: **0,4 / 0,6 MPa**
 Operating temperature: **5° ÷ 45° C**
 Predetermine pivot rotation in degrees: **45°- 60°-90°-120°**
 Rotary table position: **Horizontal 90°**
 Electronic sensor with M12 swivel connector (from 0° or 90°)
 Supply voltage: 10 ÷ 30 Vdc
 IP code: **IP 65**

*: TOLERANCE BETWEEN DOWEL HOLES ± 0,02, BETWEEN SCREW HOLES ± 0,1

Subject to technical modifications without notice