

LAGP063

Unità rotante pneumatica



L	A	G	P	0	6	3	V	U	0	9	0	W
1	2	3	4	5	6	7						

1 Serie	2 Versione	3 Taglia
----------------	-------------------	-----------------

LAG = Unità rotante con angoli di rotazione determinati

P = Pneumatica standard

063 = Cilindro Ø 63 mm

4 Posizione tavola	5 Sensore di posizione	6 Angoli di rotazione
---------------------------	-------------------------------	------------------------------

V = Verticale 180°
O = Orizzontale 90°
Z = Verticale, speculare alla posizione V
P = Orizzontale, speculare alla posizione O (massima apertura angolare 60°)

E = Sensore elettronico con connettore girevole M12 (DF-U)
A = Sensore elettronico con connettore girevole M12 + sistema frenante aggiuntivo (2x DF-U)

120 = 120°
090 = 90°
060 = 60°
045 = 45°

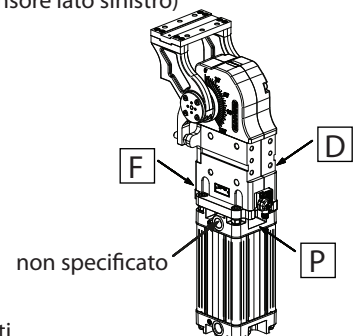
7 Blocco di stazionamento	8 Valvola	9 Connessioni
----------------------------------	------------------	----------------------

B = Senza blocco di stazionamento

C = Valvola integrata per ottimizzazione del tempo di ciclo

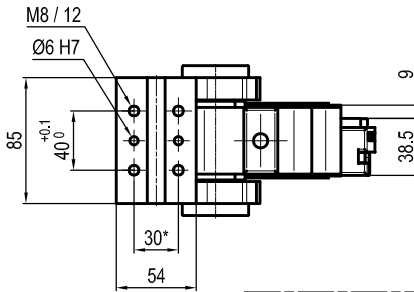
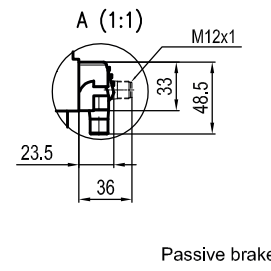
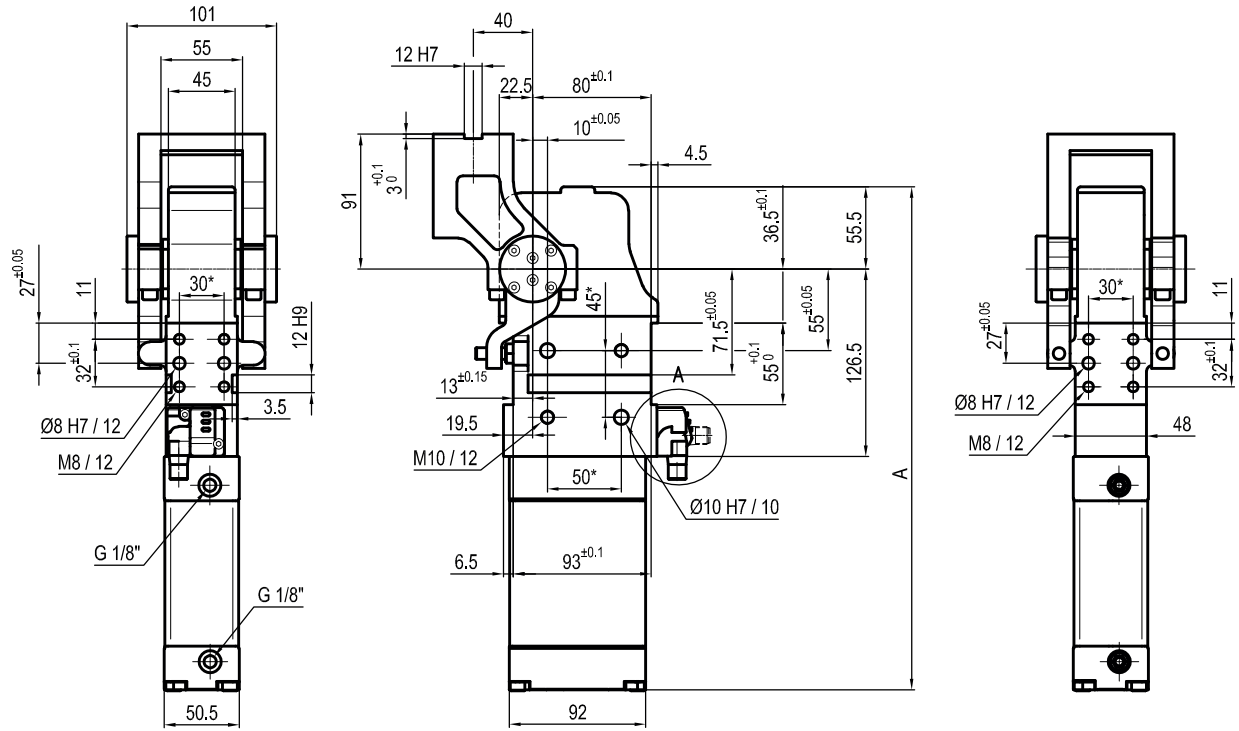
D = Lato destro (sensore lato destro)
F = Lato frontale (frontale al sensore)
P = Lato posteriore (stesso lato del sensore)

Se non specificato, sul lato sinistro (sensore lato sinistro)

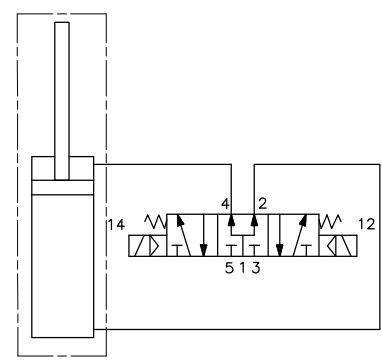
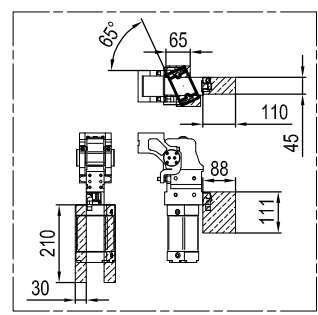


UNIVER SpA raccomanda di far convalidare all'ufficio tecnico UNIVER tutte le applicazioni di Unità Rotanti

LAGP063OU__W



Pivot rotation in degrees	A
45°	303.5
60°	310.5
90°	325.5
120°	339.5



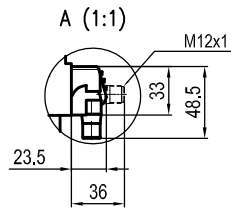
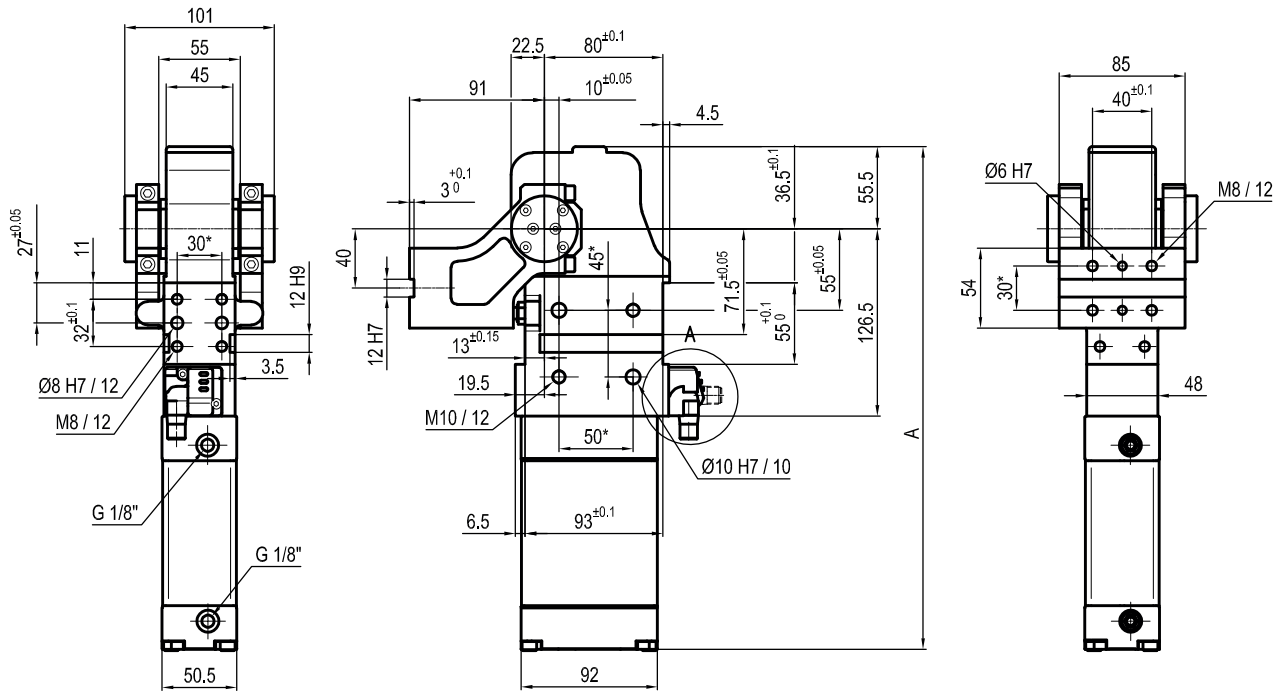
Size	Holding moment	Max. torque at the rotary table 0,55 MPa	Weight
63	1750 Nm	11 Nm	5,1 Kg

Min./Max. operating pressure: **0,4 / 0,6 MPa**
 Operating temperature: **5° ÷ 45° C**
 Predetermine pivot rotation in degrees: **45°- 60°- 90°- 120°**
 Rotary table position: **Horizontal 90°**
 Electronic sensor with M12 swivel connector, (from 0° or 90°)
 Supply voltage: 10 ÷ 30 Vdc
 IP code: **IP 65**

*: TOLERANCE BETWEEN DOWEL HOLES ± 0,02, BETWEEN SCREW HOLES ± 0,1

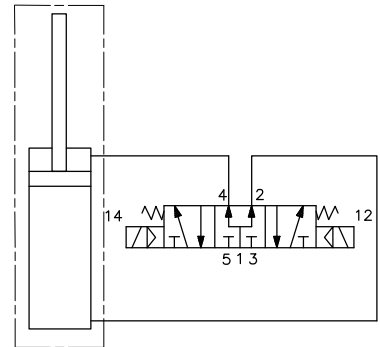
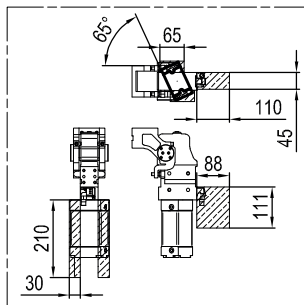
Subject to technical modifications without notice

LAGP063VU__W



Passive brake

Pivot rotation in degrees	A
45°	303.5
60°	310.5
90°	325.5
120°	339.5



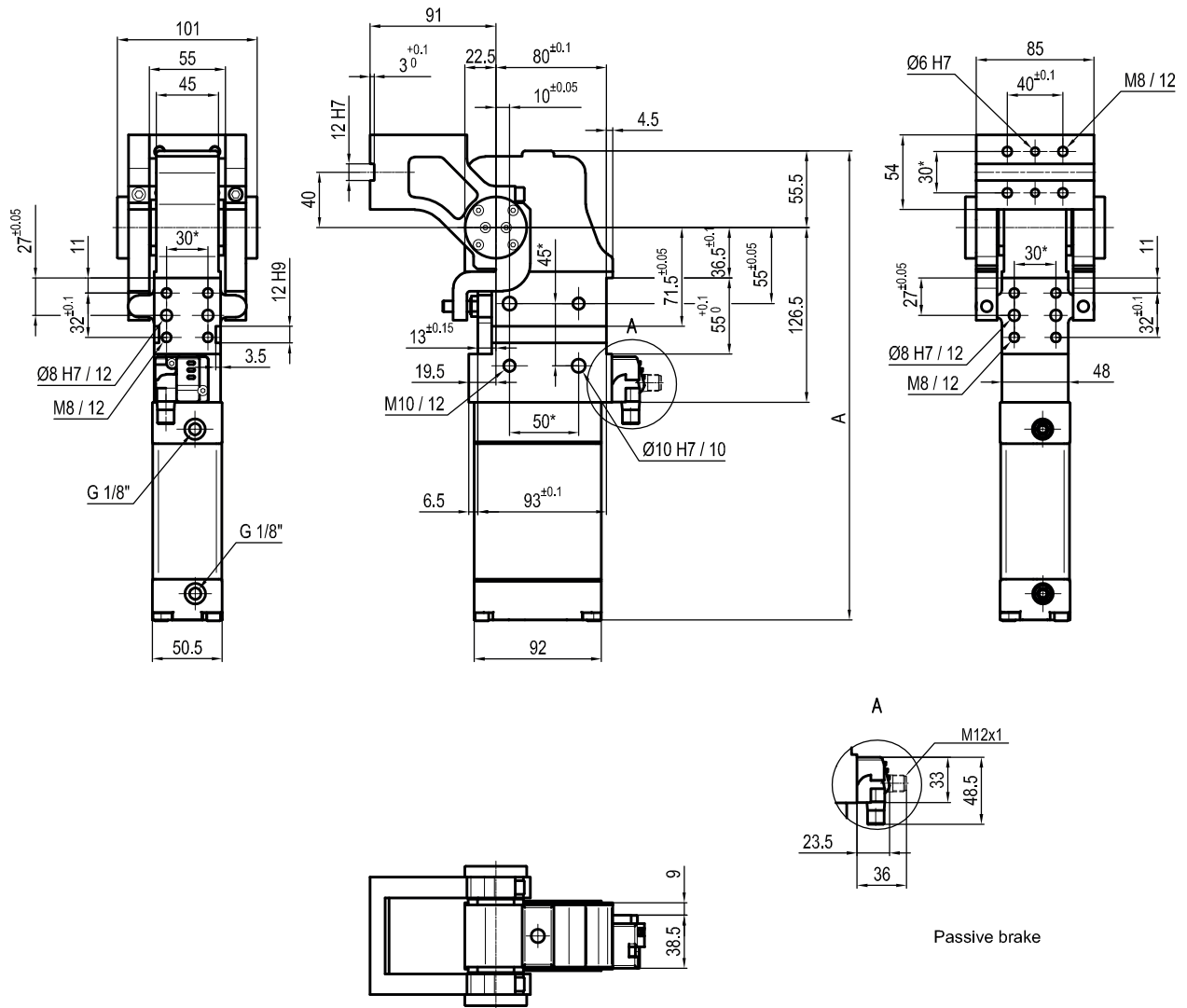
Size	Holding moment	Max. torque at the rotary table 0,55 MPa	Weight
63	1750 Nm	11 Nm	5,1 Kg

Min./Max. operating pressure: **0,4 / 0,6 MPa**
 Operating temperature: **5° ÷ 45° C**
 Predetermine pivot rotation in degrees: **45°- 60°-90°-120°**
 Rotary table position: **Horizontal 90°**
 Electronic sensor with M12 swivel connector (from 0° or 90°)
 Supply voltage: 10 ÷ 30 Vdc
 IP code: **IP 65**

*: TOLERANCE BETWEEN DOWEL HOLES ± 0,02, BETWEEN SCREW HOLES ± 0,1

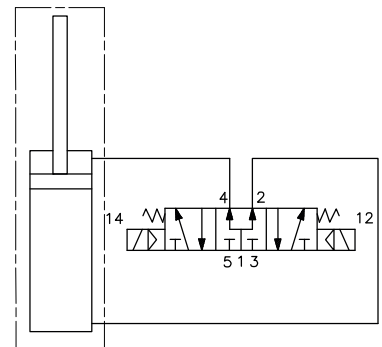
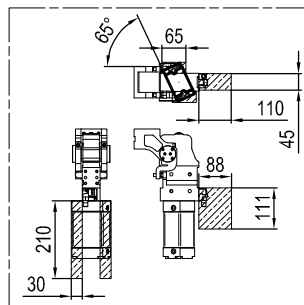
Subject to technical modifications without notice

LAGP063ZU__W



Passive brake

Pivot rotation in degrees	A
45°	303.5
60°	310.5
90°	325.5
120°	339.5



Size	Holding moment	Max. torque at the rotary table 0,55 MPa	Weight
63	1750 Nm	11 Nm	5,1 Kg

Min./Max. operating pressure: **0,4 / 0,6 MPa**
 Operating temperature: **5° ÷ 45° C**
 Predetermine pivot rotation in degrees: **45°- 60°-90°-120°**
 Rotary table position: **Horizontal 90°**
 Electronic sensor with M12 swivel connector (from 0° or 90°)
 Supply voltage: 10 ÷ 30 Vdc
 IP code: **IP 65**

*: TOLERANCE BETWEEN DOWEL HOLES ± 0,02, BETWEEN SCREW HOLES ± 0,1

Subject to technical modifications without notice