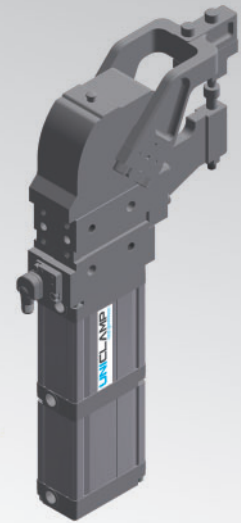


# UPD05

UNICLAMP Marking units, single character



U	P	D	0	5	0	8	O	F	M	0	0	F	0
1			2		3		4	5		6		7	8

<b>1 Series</b>	<b>2 Version</b>	<b>3 Size</b>
UPD = UNICLAMP Marking units single character	05 = 500 Nm Ø 63 mm tandem cylinder	08 = 84 mm

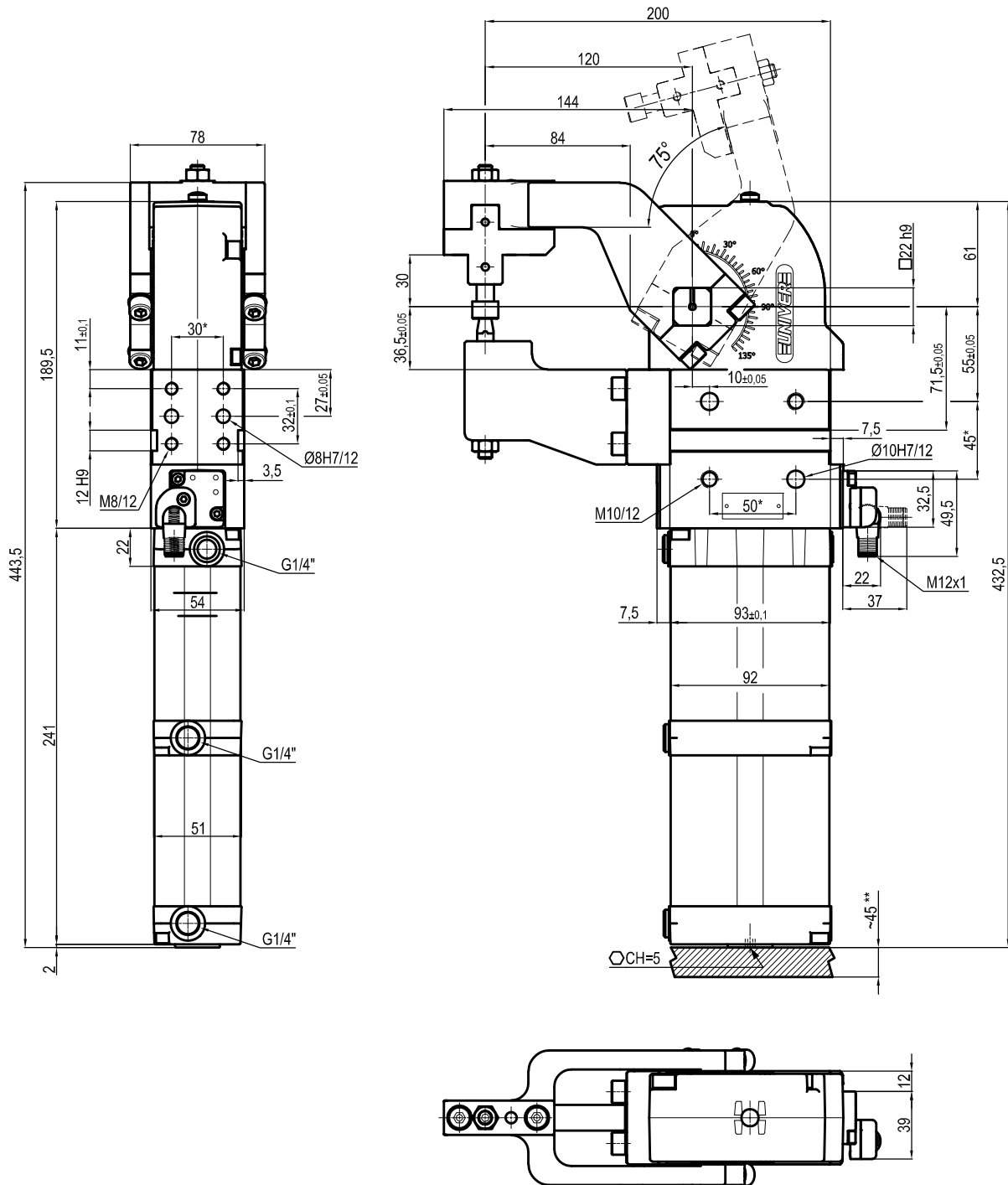
<b>4 Opening angle</b>	<b>5 Character mounting position</b>	<b>6 Character</b>
OF = 75° fixed	M = On the moving part F = On the fixed part	00 = Standard version (without character)

Progressive numbers are assigned by the Sales dept.

<b>7 Connections</b>	<b>8 Product revision</b>
F = Front side (in front of the sensor) P = Rear side (same side as sensor)	Assigned by UNIVER



## UPD0508OFF\_\_F0



Bore Ø	Clamping moment (0,5 MPa)	Marking force (0,5 MPa)	Air/Cycle (0,5 MPa)	Weight
63 mm	500 Nm	4 kN	3,7 NI	6,6 Kg

 Min./Max. operating pressure: **0,4 / 0,6 MPa**

 Operating temperature: **5°± 45° C**

 Opening angle: **75°**

Pneumatic ports on both sides

Electronic sensor with M12 swivel connector, from 0° to 90°, in steps of 10°

 IP code: **IP 65**

Pneumatic ports on both sides

\*: TOLERANCE BETWEEN DOWELS ± 0,02, BETWEEN SCREW HOLES ± 0,1

\*\*\*: AREA TO ACCESS ANGLE ADJUSTMENT

Subject to technical modifications without notice

Rev. 02 01.12.22