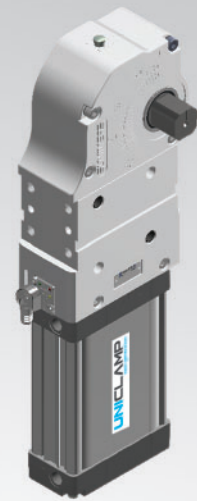


UCNP80

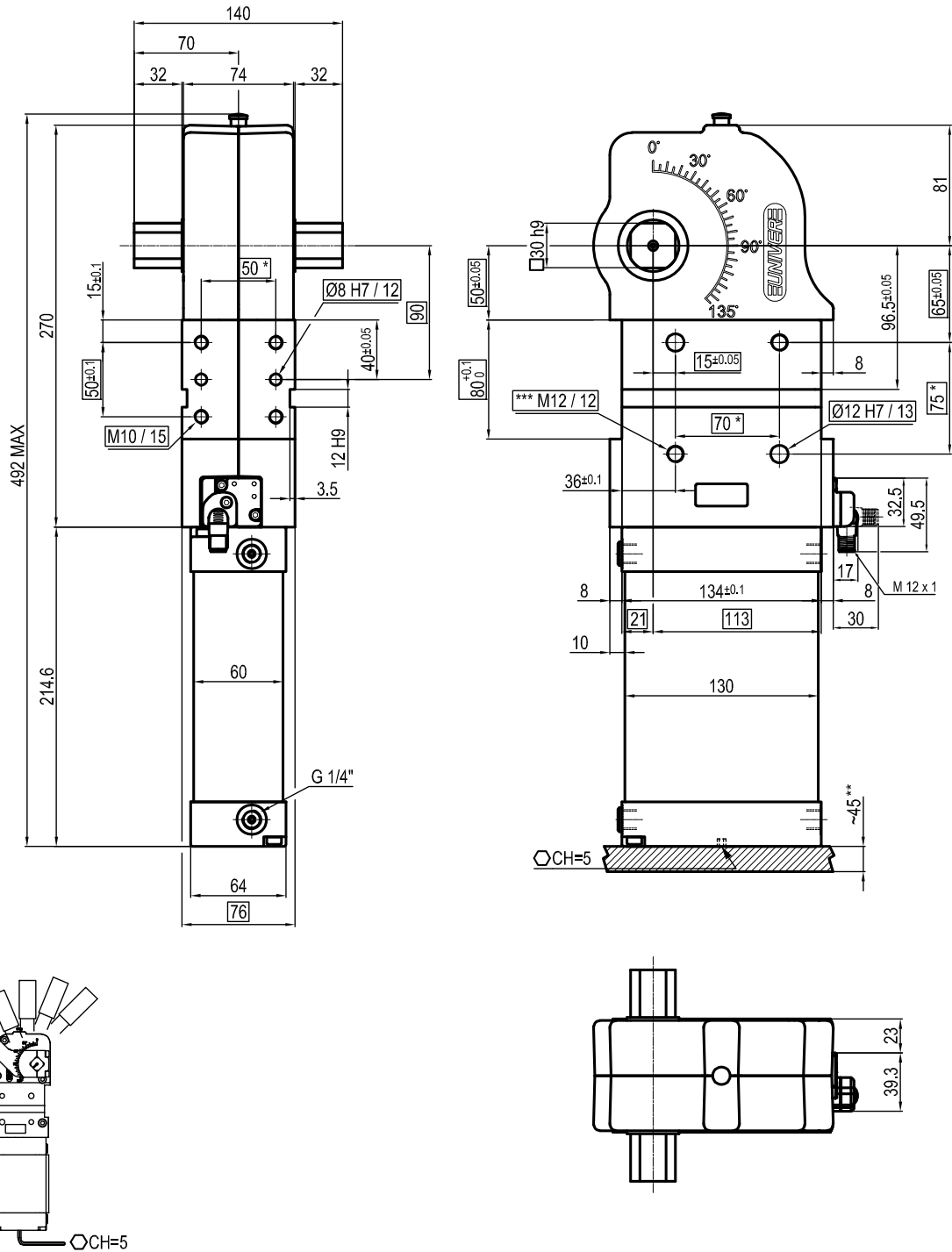
UNICLAMP Power clamps
conforming to NAAMS Standard



U	C	N	P	8	0	N	N	K	G	0
1	2	3		4		5	6	7	8	9



1 Series UC = UNICLAMP Power clamps fully adjustable opening angle: 0° to 135° Max	2 Standard N = NAAMS Standard	3 Version P = Pneumatic
4 Size 80 = Ø 80 mm	5 Arm position N = No arm	6 Square shaft R = Right side only L = Left side only N = Both sides
7 Sensor N = No sensor (with protection plate) K = PNP Electronic sensor (optical) (DF-K)	8 Port thread G = Gas N = NPT	9 Product Revision Assigned by UNIVER

UCNP80NNKG0


Bore \varnothing	Holding moment	Clamping moment (0,5 MPa)	Weight (clamping arm not included)
80 mm	4000 Nm	1100 Nm	8,6 Kg

* : TOLERANCE BETWEEN DOWELS $\pm 0,02$, BETWEEN SCREW HOLES $\pm 0,1$
 ** : AREA TO ACCESS ANGLE ADJUSTMENT
 *** : SCREW THREAD INSERT

Min./Max. operating pressure: **0,4 / 0,6 MPa**

Operating temperature: **5° ÷ 45° C**

Opening angle: **adjustable**

Without arm

Electronic sensor with M12 swivel connector, from 0° to 90°, in steps of 10°

Supply voltage: 10 ÷ 30 Vdc

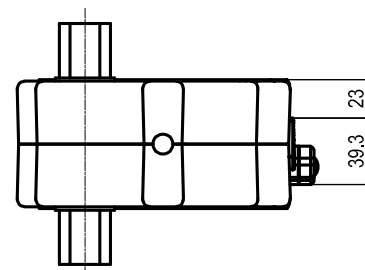
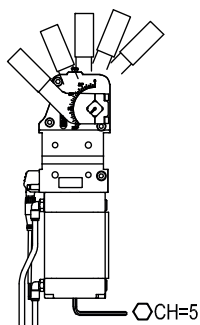
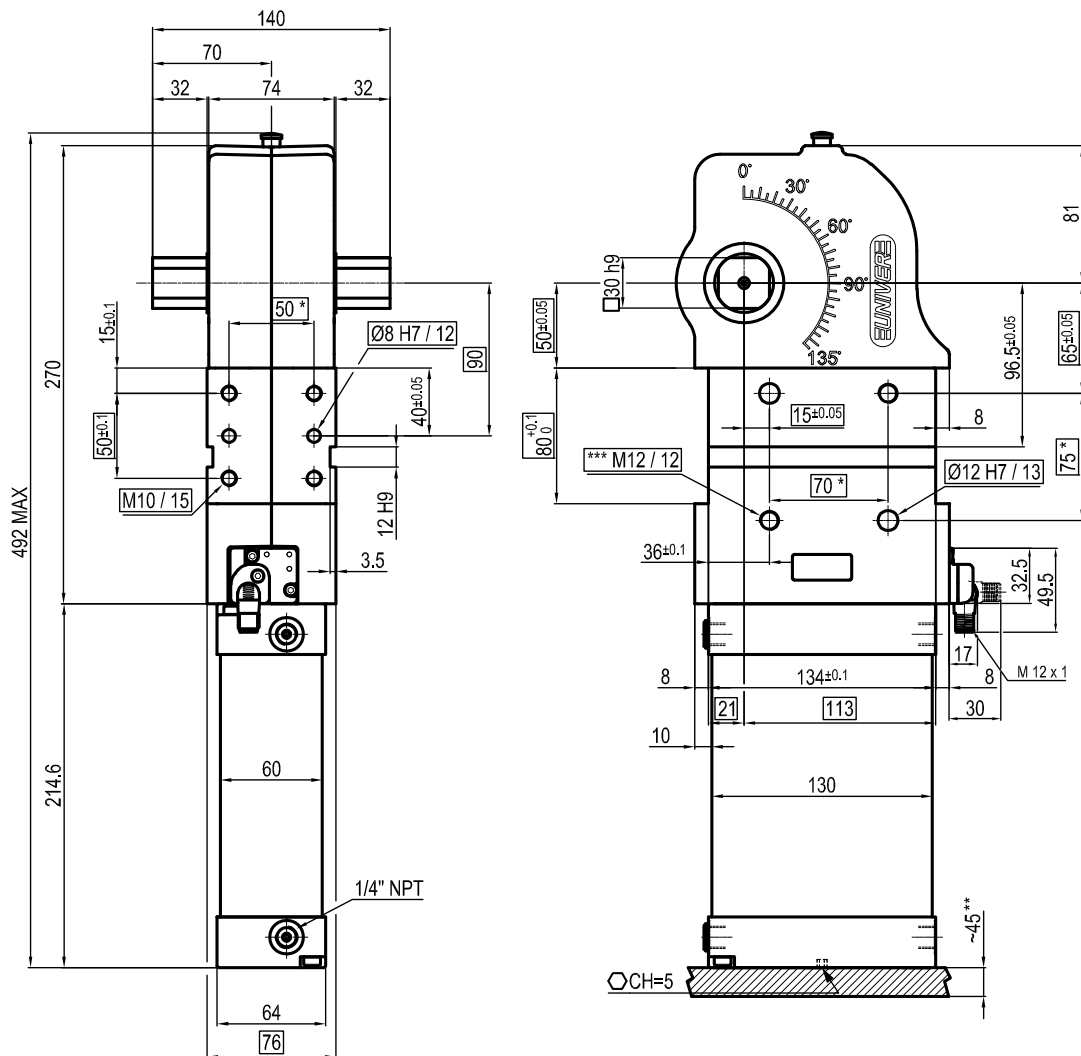
IP code: **IP 65**

Pneumatic ports on both sides

Subject to technical modifications without notice

Rev. 01 26.01.22

UCNP80NNKNO



Bore Ø	Holding moment	Clamping moment (0,5 MPa)	Weight (clamping arm not included)
80 mm	4000 Nm	1100 Nm	8,6 Kg

Min./Max. operating pressure: **0,4 / 0,6 MPa**

Operating temperature: **5° ÷ 45° C**

Opening angle: **adjustable**

Without arm

Electronic sensor with M12 swivel connector, from 0° to 90°, in steps of 10°

Supply voltage: 10 ÷ 30 Vdc

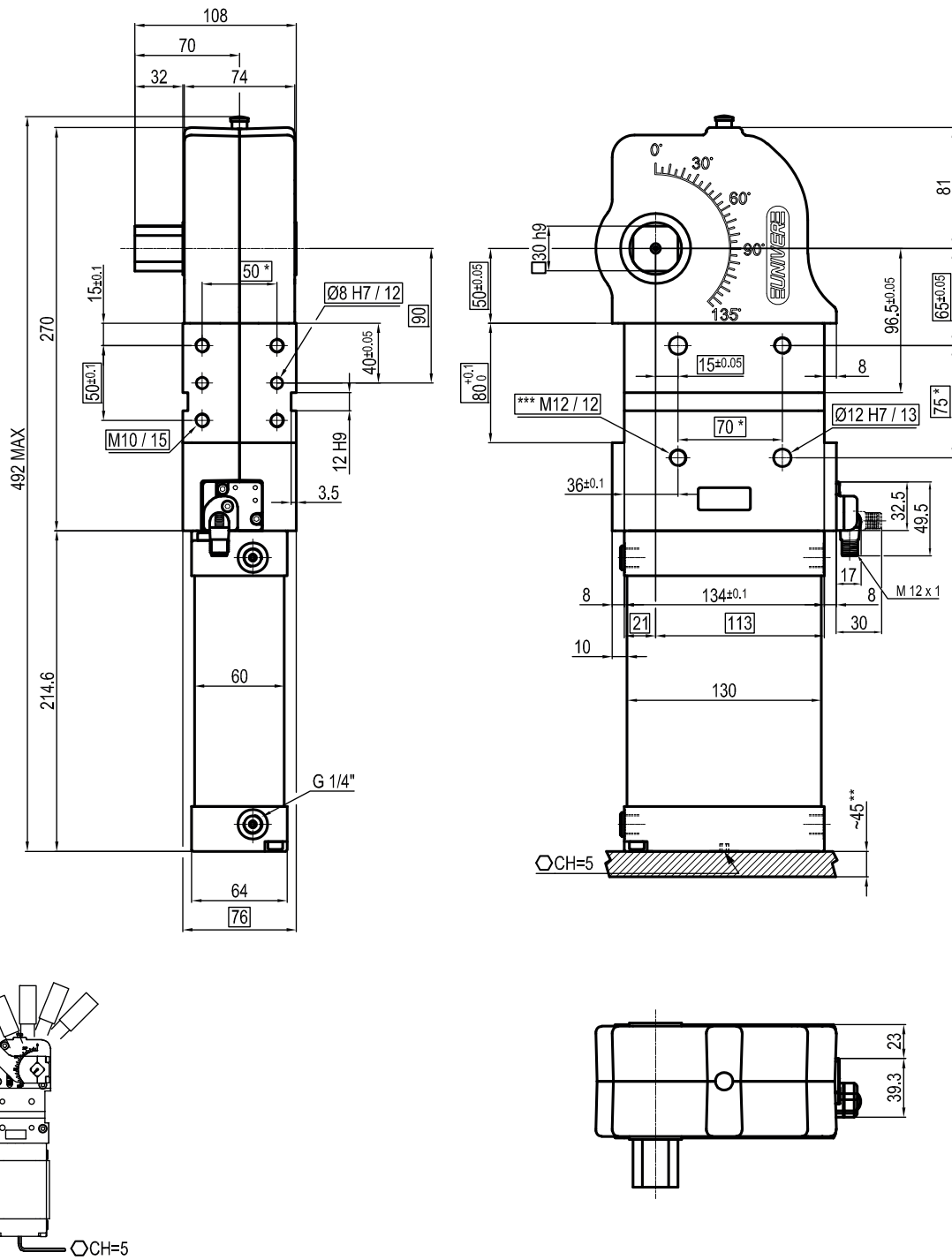
IP code: **IP 65**

Pneumatic ports on both sides

* : TOLERANCE BETWEEN DOWELS ± 0,02, BETWEEN SCREW HOLES ± 0,1

** : AREA TO ACCESS ANGLE ADJUSTMENT

***: SCREW THREAD INSERT

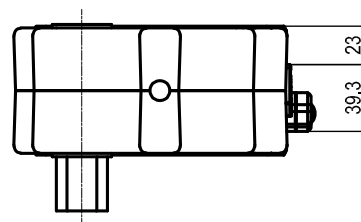
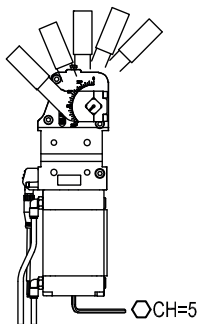
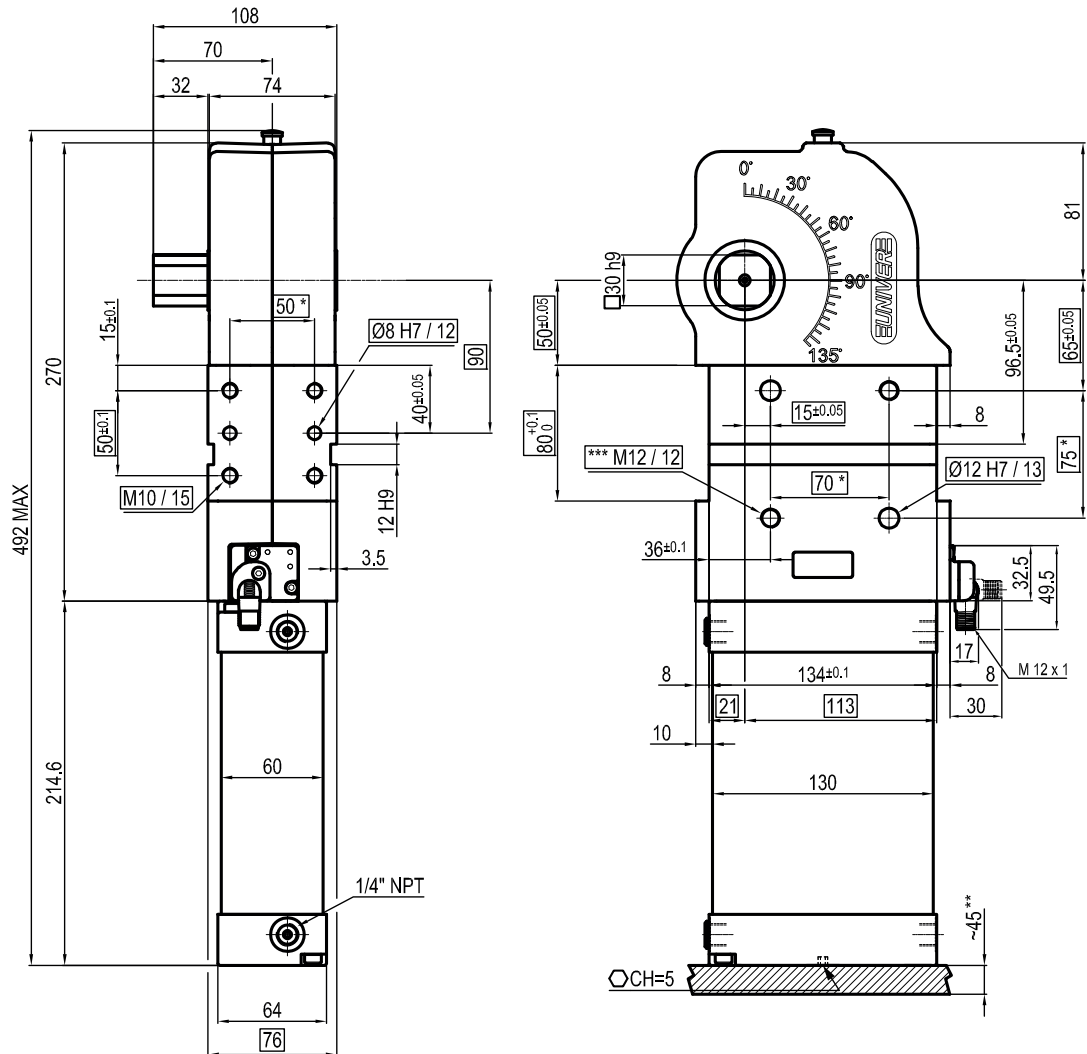
UCNP80NLKG0


Bore Ø	Holding moment	Clamping moment (0,5 MPa)	Weight (clamping arm not included)
80 mm	4000 Nm	1100 Nm	8,6 Kg

* : TOLERANCE BETWEEN DOWELS $\pm 0,02$, BETWEEN SCREW HOLES $\pm 0,1$
 ** : AREA TO ACCESS ANGLE ADJUSTMENT
 *** : SCREW THREAD INSERT

Min./Max. operating pressure: **0,4 / 0,6 MPa**
 Operating temperature: **5° ÷ 45° C**
 Opening angle: **adjustable**
 Without arm
 Electronic sensor with M12 swivel connector, from 0° to 90°, in steps of 10°
 Supply voltage: 10 ÷ 30 Vdc
 IP code: **IP 65**
 Pneumatic ports on both sides

UCNP80NLKN0



Bore Ø	Holding moment	Clamping moment (0,5 MPa)	Weight (clamping arm not included)
80 mm	4000 Nm	1100 Nm	8,6 Kg

 Min./Max. operating pressure: **0,4 / 0,6 MPa**

 Operating temperature: **5° ÷ 45° C**

 Opening angle: **adjustable**

Without arm

Electronic sensor with M12 swivel connector, from 0° to 90°, in steps of 10°

Supply voltage: 10 ÷ 30 Vdc

 IP code: **IP 65**

Pneumatic ports on both sides

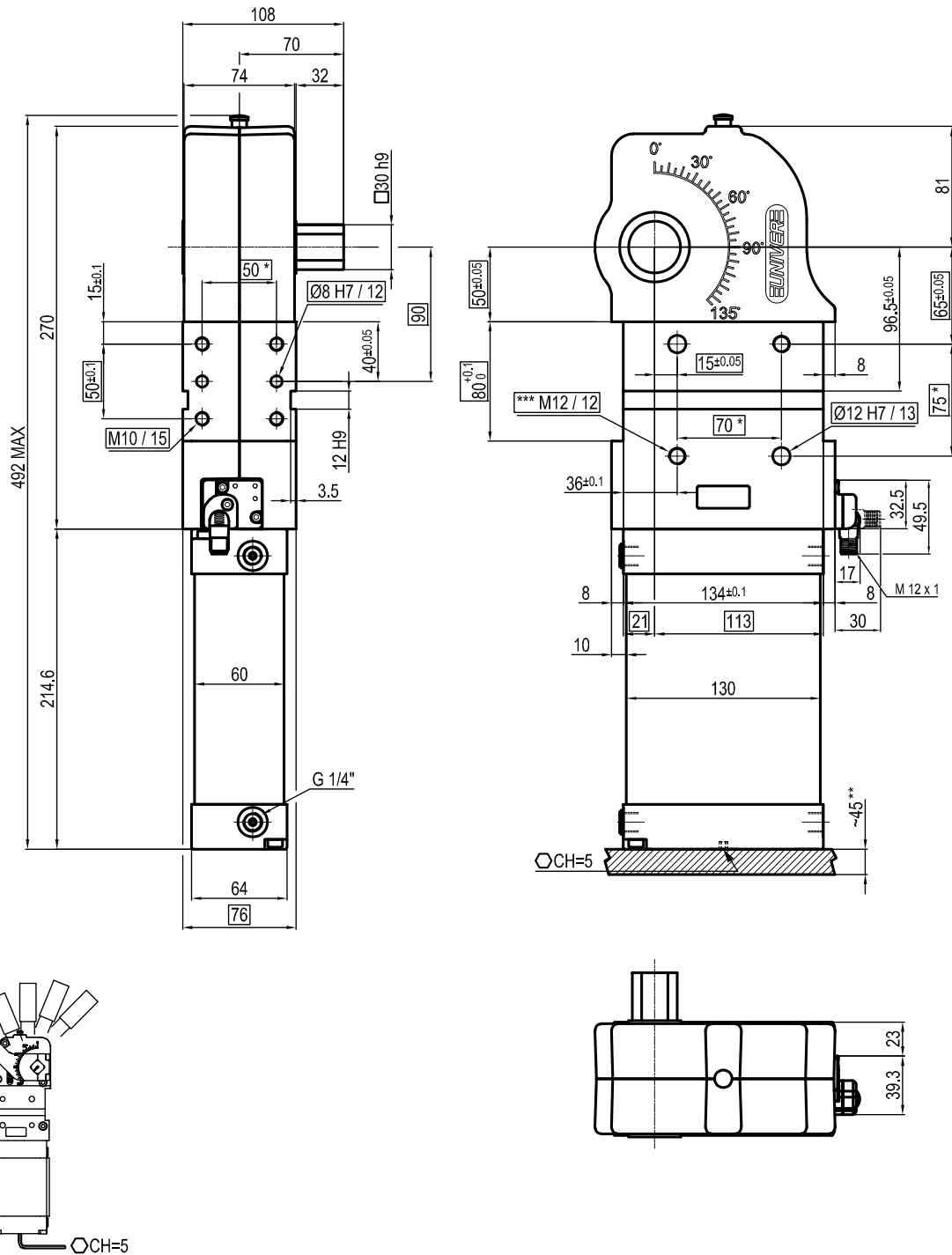
*: TOLERANCE BETWEEN DOWELS ± 0,02, BETWEEN SCREW HOLES ± 0,1

**: AREA TO ACCESS ANGLE ADJUSTMENT

***: SCREW THREAD INSERT

Subject to technical modifications without notice

Rev. 01 26.01.22

UCNP80NRKGO


Bore Ø	Holding moment	Clamping moment (0,5 MPa)	Weight (clamping arm not included)
80 mm	4000 Nm	1100 Nm	8,6 Kg

* : TOLERANCE BETWEEN DOWELS $\pm 0,02$, BETWEEN SCREW HOLES $\pm 0,1$

** : AREA TO ACCESS ANGLE ADJUSTMENT

*** : SCREW THREAD INSERT

Min./Max. operating pressure: **0,4 / 0,6 MPa**

Operating temperature: **5° ÷ 45° C**

Opening angle: **adjustable**

Without arm

Electronic sensor with M12 swivel connector, from 0° to 90°, in steps of 10°

Supply voltage: 10 ÷ 30 Vdc

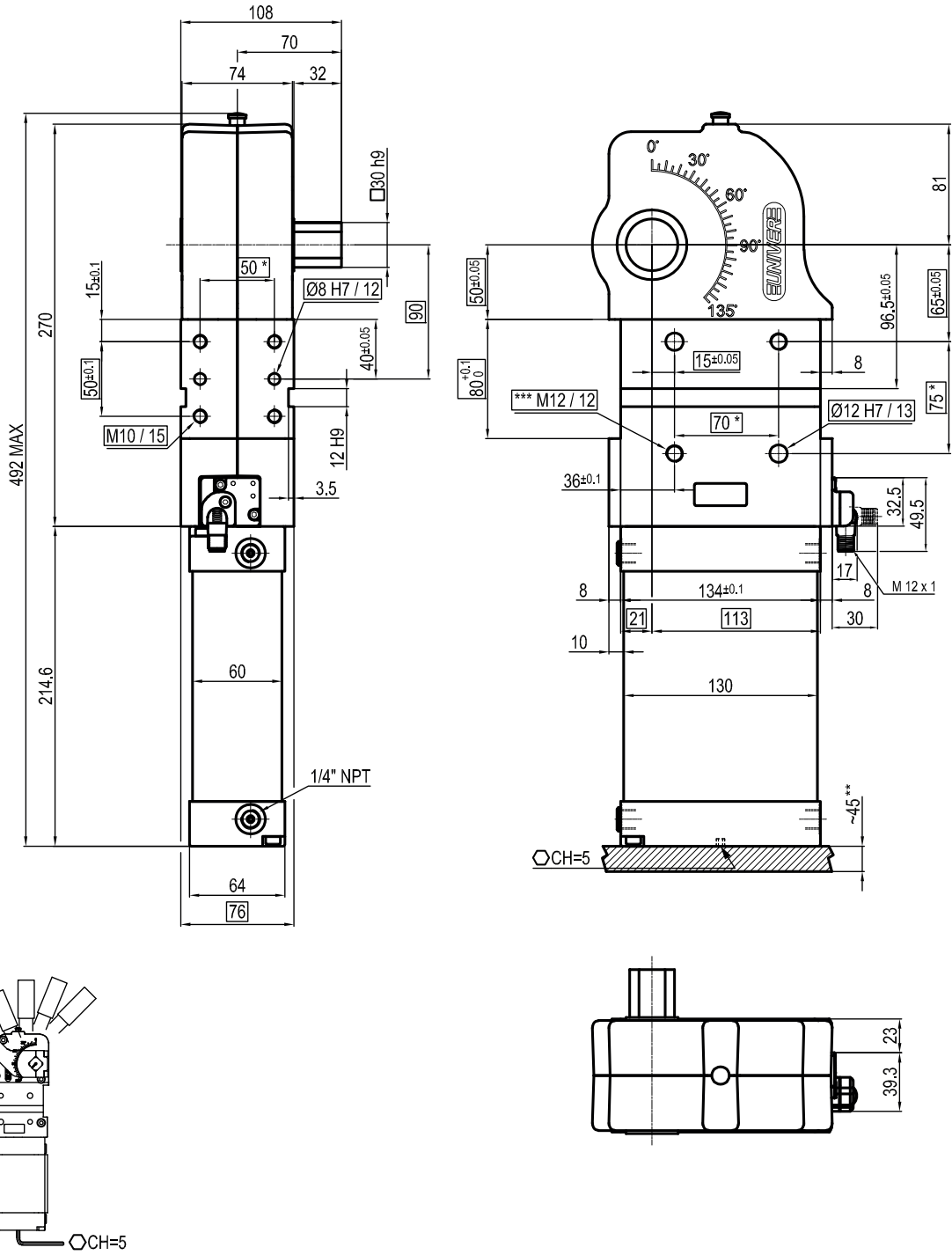
IP code: **IP 65**

Pneumatic ports on both sides

Subject to technical modifications without notice

Rev. 01 26.01.22

UCNP80NRKNO



Bore Ø	Holding moment	Clamping moment (0,5 MPa)	Weight (clamping arm not included)
80 mm	4000 Nm	1100 Nm	8,6 Kg

Min./Max. operating pressure: **0,4 / 0,6 MPa**
 Operating temperature: **5° ÷ 45° C**
 Opening angle: **adjustable**
 Without arm
 Electronic sensor with M12 swivel connector, from 0° to 90°, in steps of 10°
 Supply voltage: 10 ÷ 30 Vdc
 IP code: **IP 65**
 Pneumatic ports on both sides

* : TOLERANCE BETWEEN DOWELS ± 0,02, BETWEEN SCREW HOLES ± 0,1
 ** : AREA TO ACCESS ANGLE ADJUSTMENT
 *** : SCREW THREAD INSERT

Subject to technical modifications without notice

Rev. 01 26.01.22