

ULR 50

Compact pneumatic retractable locating pin unit, single rod, Ø50 mm

Compact pneumatic retractable pin unit, single rod, typically used in welding applications to locate metal sheets in a definite position.



- Metal rod scraper
- Antirotation system
- Double guide to avoid backlash
- Compact dimensions
- Electronic or pneumatic sensor
- Many rod end styles available

3

CHARACTERISTICS

| | |
|------------------------------|----------------------|
| Operating temperature | 5° ÷ 45° C |
| Min./Max. operating pressure | 0,4 / 0,6 MPa |
| Bore Ø | 50 mm |
| Max Pull force (0,5 MPa) | 860 N |
| Max Push force (0,5 MPa) | 960 N |
| Max. Torque (6 Nm) | ± 0,06 mm |
| Max. Deflection (7,5 Nm) | ± 0,03 mm |
| Weight | 1,9 Kg |
| Pneumatic supply ports | G 1/4 |
| Sensor | electronic (optical) |
| Supply voltage | 10 ÷ 30 Vdc |
| IP code | IP 65 |

CODIFICATION KEY



OPTICAL SENSOR

LIGHTWEIGHT

COMPACT

METAL SCRAPER

DOUBLE GUIDE

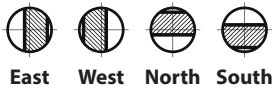
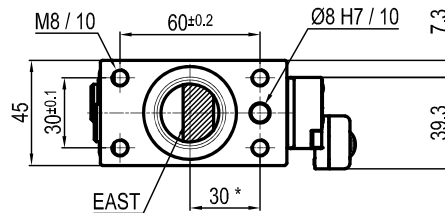
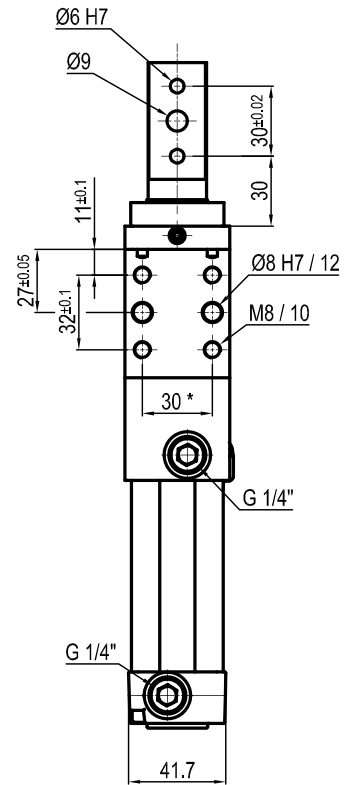
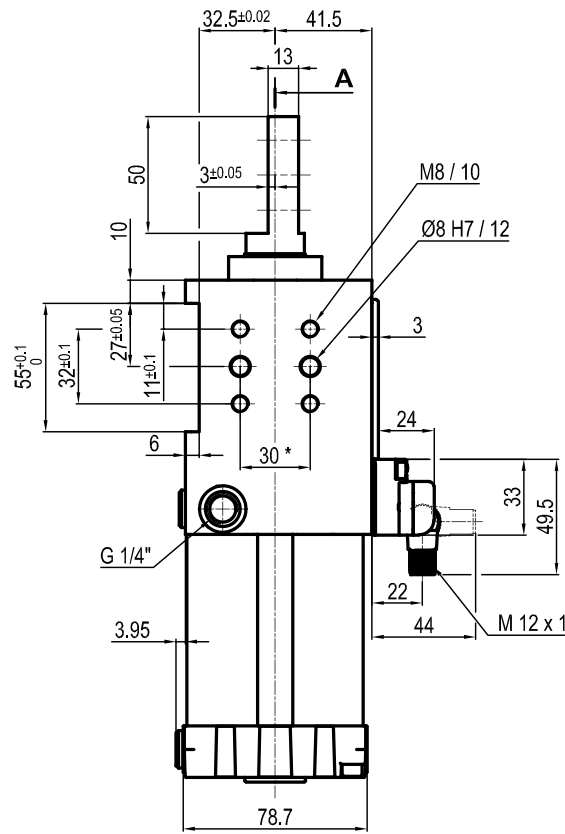
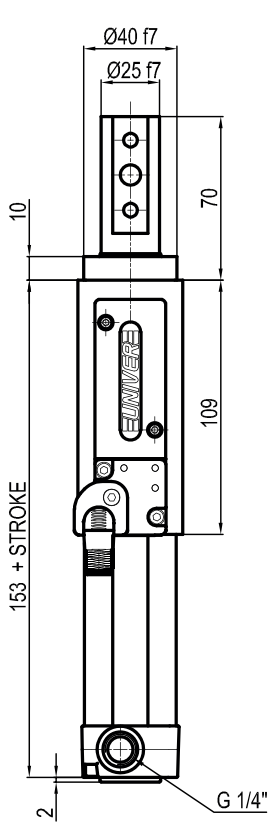
ANTI ROTATION

- 1 SERIES
UL = UNICLAMP locating pin unit
- 2 VERSION
R = Compact pneumatic, single rod
- 3 SIZE
50 = Ø50 mm
- 4 STROKE
015 = 15 mm
025 = 25 mm
040 = 40 mm
050 = 50 mm
060 = 60 mm
- 5 ROD END STYLE
A = Rod for offset pins
B = Rod with profiled end
C = Rod with cross-profiled end inner Ø 16 mm
D = Rod for offset pins with oversized dowel holes
E = Rod with cross profiled end inner Ø 10 mm
F = Rod for side mounting
H = Rod with flat end, inner Ø10 mm
I = Rod with flat end, inner Ø12 mm
L* = Rod with inner Ø12 mm
M* = Rod with inner Ø 20 mm
*compatible with CNOMO standard

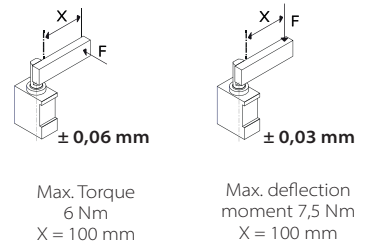
- 6 ROD ORIENTATION
X = Symmetrical

E* = East
O* = West
N* = North
S* = South
*only with "A" and "D" rod style
- 7 SENSOR
N = No sensor (with protection plate)
K = Electronic sensor PNP, M12(DF-K)
D = Pneumatic sensor (DF-UPNW)
J = Electronic sensor NPN, optical (DF-J)
Y = Electronic sensor PNP, M12 (DF-Y) white LED
- 8 PRODUCT REVISION
Assigned by UNIVER
- 9 ATEX
X = ATEX option
See ATEX Catalogue for types and versions

A Rod for offset pins



*TOLERANCE BETWEEN DOWELS ± 0,02 BETWEEN SCREW HOLES ± 0,1



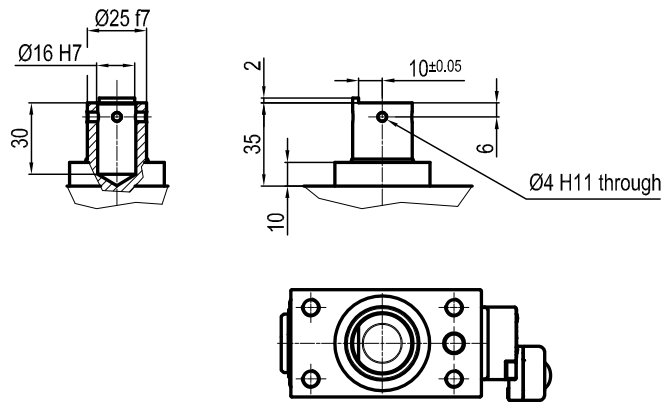
Sensors



Electronic (optical)

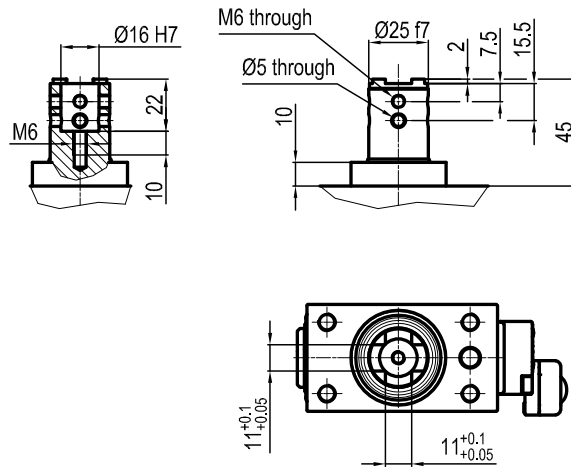
- DF-K PNP M12
- DF-J NPN M12
- DF-Y PNP M12 White LED

B Rod with profiled end

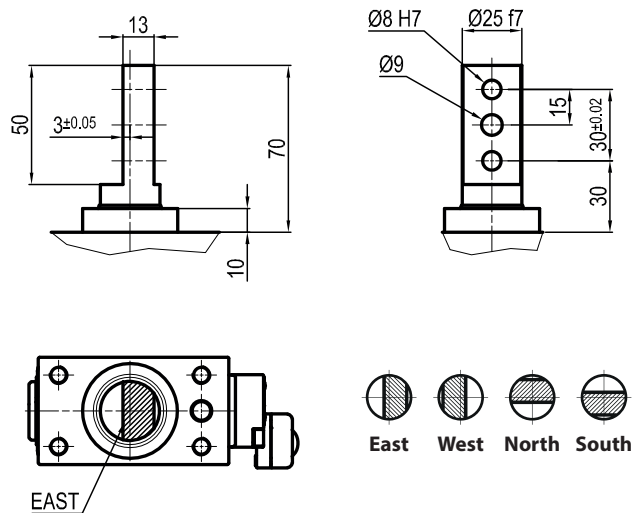


3

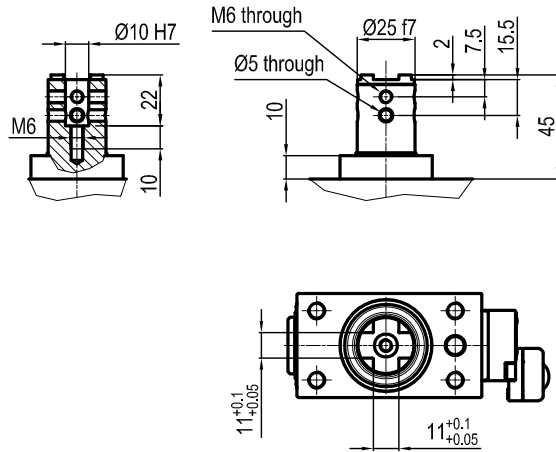
C Rod with cross-profiled end
Inner Ø16 mm



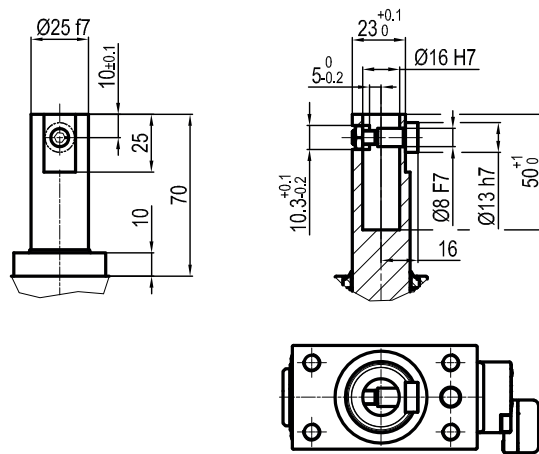
D Rod for offset pins
Oversized dowel holes



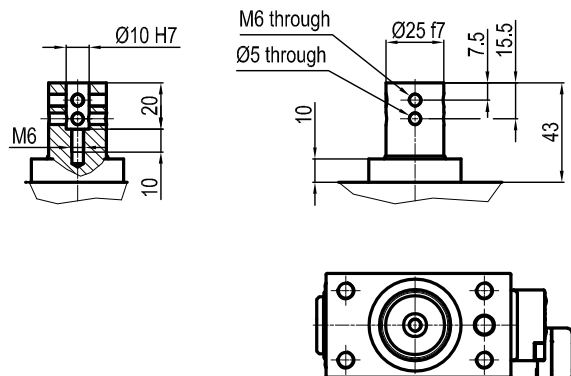
E Rod with cross-profiled end
Inner Ø10 mm



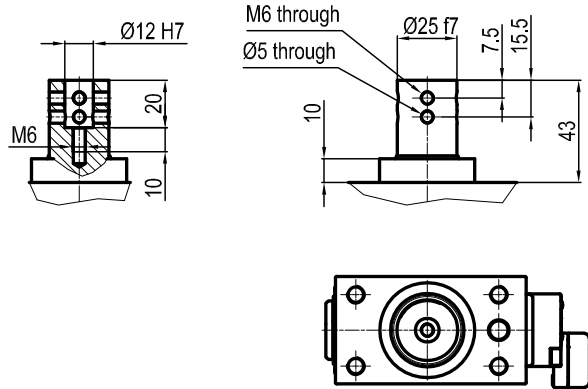
F Compatible with NAAMS
Inner Ø16 mm



H Rod with flat end
Inner Ø10 mm

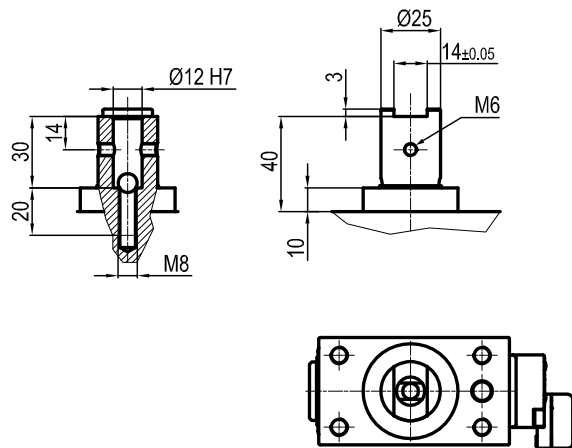


I Rod with flat end
Inner Ø12 mm



3

L Rod compatible with CNOMO standard
Inner Ø12 mm



M Rod compatible with CNOMO standard
Inner Ø20 mm

