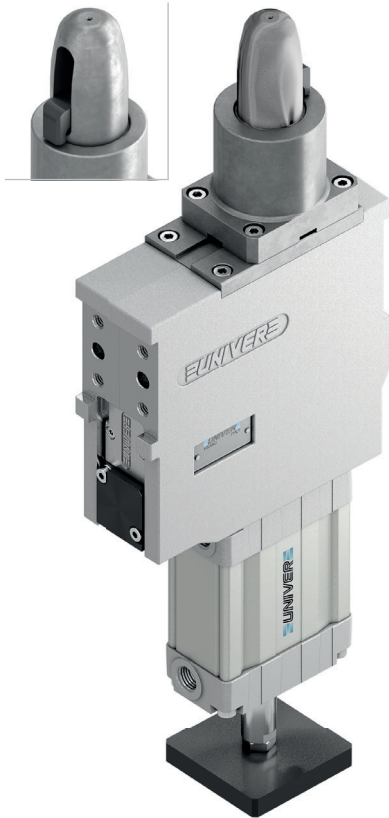


# USSL 50

Pneumatic pin clamp for laser beam applications, orientable hook, Ø50 mm

Pneumatic pin clamps for laser beam applications mainly designed for centering and clamping metal sheets in BIW underbody applications where the detection of the position is done by a laser beam instead of a position sensor

- Integrated compensation up to 2,3 mm
- Double metal scraper for protection against dust and welding debris
- Toggle-joint mechanism
- High wear resistance steel pin
- Electronic sensor
- Hook position: 0/180°
- Available version with plate machined from solid (no shimming)



6

## CHARACTERISTICS

Operating temperature	5° ÷ 45° C
Min./Max. Operating pressure	0,4 / 0,6 MPa
Bore Ø	50 mm
Clamping force	3500 N
Weight (without plate, pin and hook)	3,1 kg
Pneumatic supply ports	G1/4 on both sides
Supply voltage	10 ÷ 30 Vdc
IP code	IP 65

## CODIFICATION KEY

US | SL | 50 | J | B | 3 | 1 | - | N | 0 | |

1 2 3 4 5 6 7 8 9 10 11

IRREVERSIBLE

LIGHTWEIGHT

COMPENSATION

METAL SCRAPER

OPTICAL SENSOR

HIGH REPEATABILITY

0/180°

**1** SERIES  
US = UNICLAMP Pin clamp with compensation

**2** VERSION  
SL = Pneumatic for laser beam applications, orientable hook

**3** SIZE  
50 = Ø50 mm

**4** MODEL  
J = Standard  
R = With mechanical locking/unlocking device

**5** HOOK POSITION  
B = Standard  
C = Rotated by 180°

**6** PIN DIAMETER  
1 <= Ø18 mm  
2 = Ø20 mm  
3 = Ø25 mm  
4 = Ø30 mm  
5 = Ø35 mm  
6 = Ø40 mm  
For pin Ø outside the mentioned range, please contact our sales department

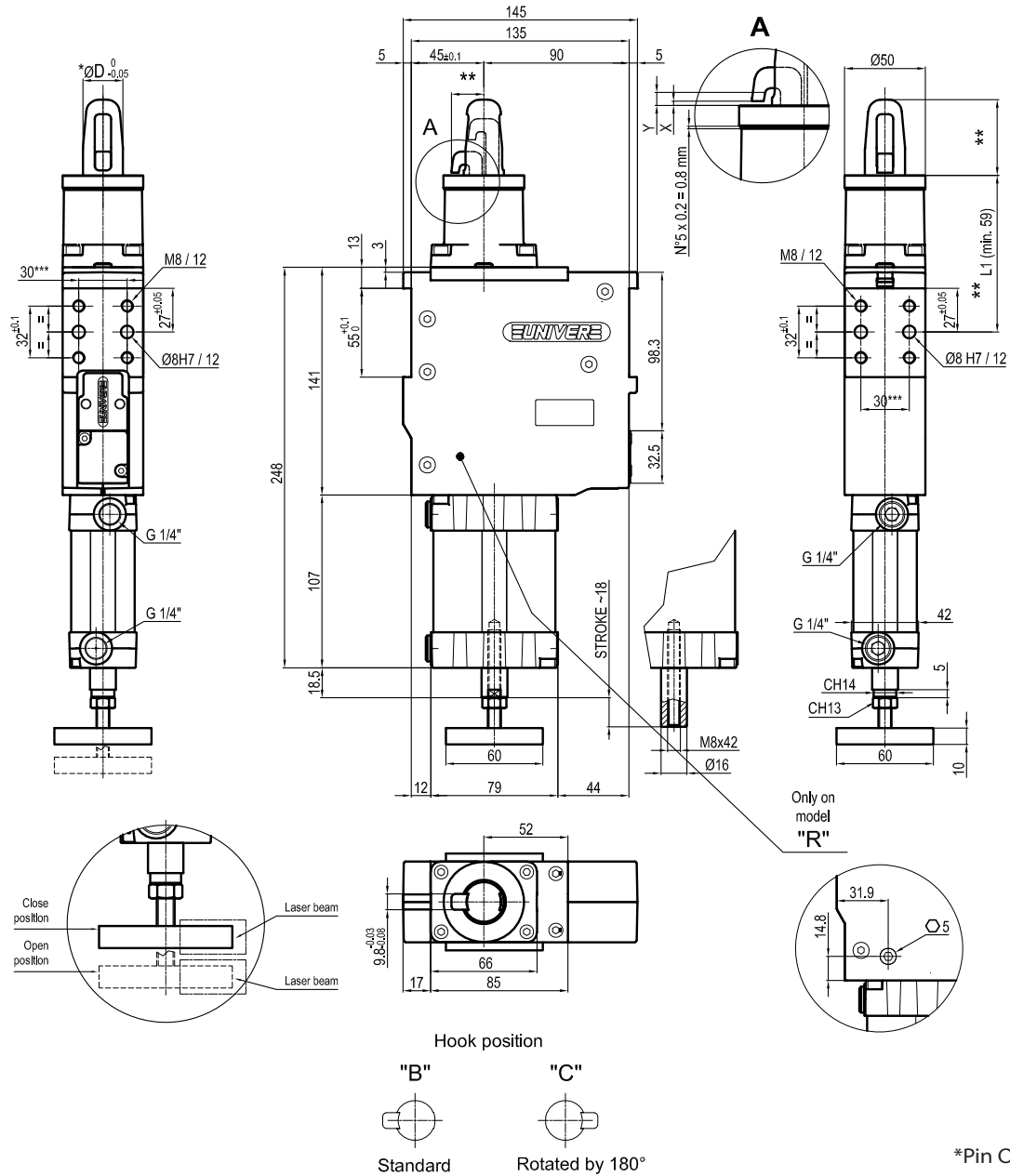
**7** LOCATING PIN  
0 = Locating pin not included  
1 = Locating pin included

**8** PROGRESSIVE NUMBERING  
Progressive numbers for special products are assigned by the Sales Department

**9** SENSOR  
N = No sensor (with protection plate)

**10** PRODUCT REVISION  
Assigned by UNIVER

**10** ATEX  
X = ATEX option  
See ATEX Catalogue for types and versions



X = Metal sheet

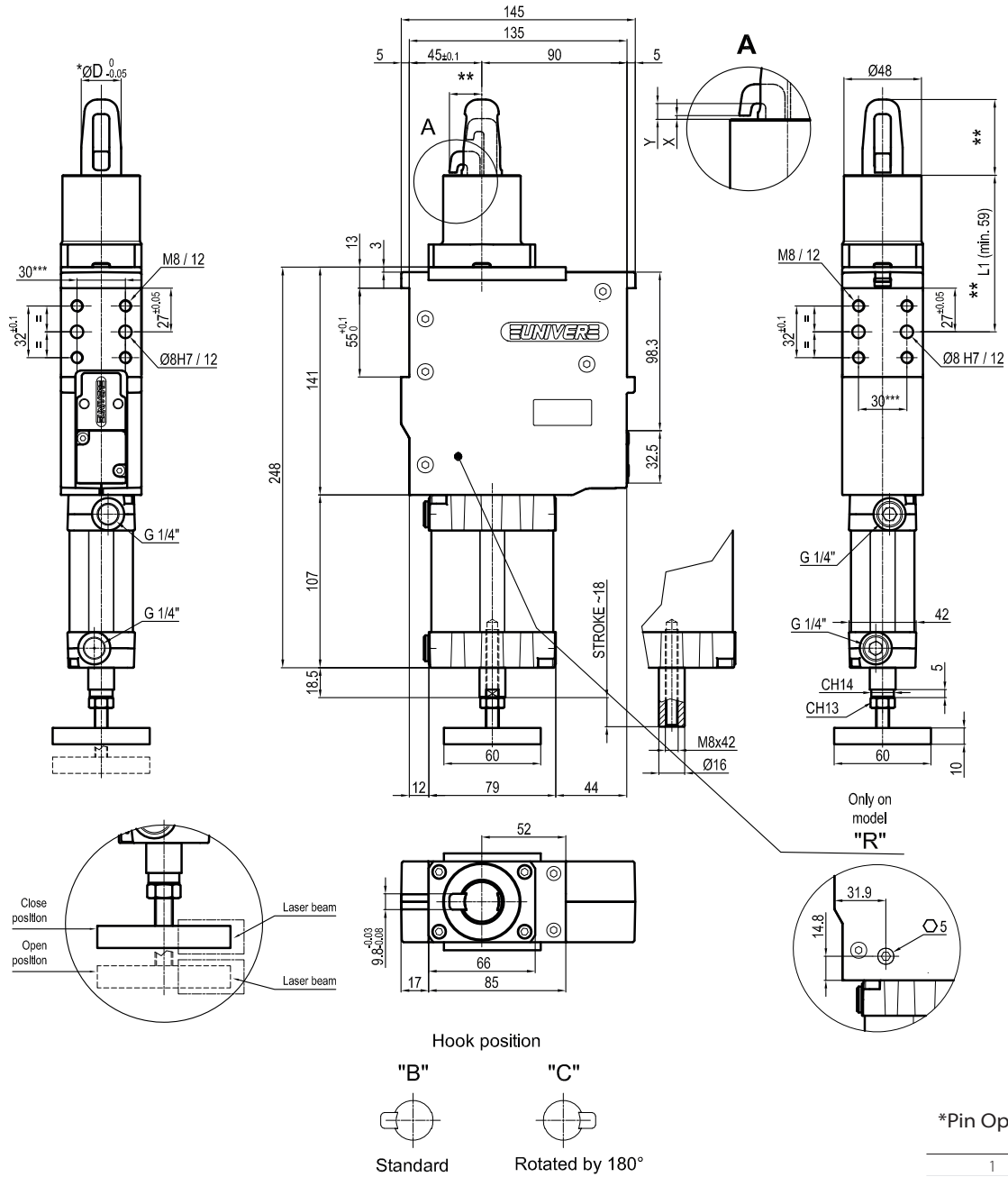
Y = Clamping range (X + 2,3 mm Max.)

VERSION WITHOUT PIN AND HOOK AVAILABLE UPON REQUEST

\*\* MISSING DIMENSION TO BE DEFINED ACCORDING TO CUSTOMER SPECIFICATIONS

\*\*\* TOLERANCE BETWEEN DOWEL HOLES  $\pm 0,02$ , BETWEEN SCREW HOLES  $\pm 0,1$

Version with plate machined from solid (no shimming)



X = Metal sheet  
 Y = Clamping range (X + 2,3 mm Max.)  
 VERSION WITHOUT PIN AND HOOK AVAILABLE UPON REQUEST  
 \*\* MISSING DIMENSION TO BE DEFINED ACCORDING TO CUSTOMER SPECIFICATIONS  
 \*\*\* TOLERANCE BETWEEN DOWEL HOLES ± 0,02, BETWEEN SCREW HOLES ± 0,1