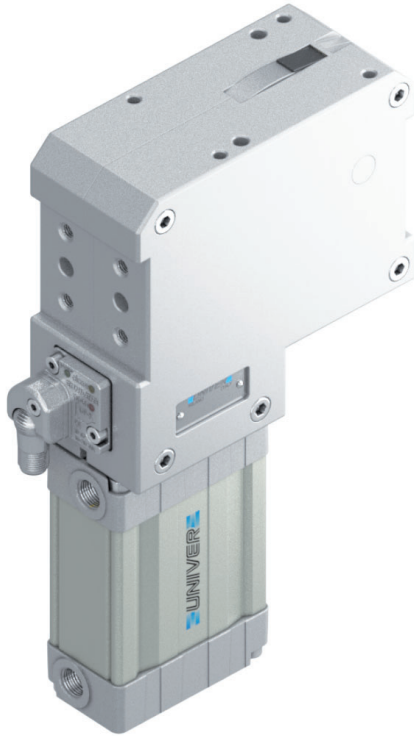


UST 50

Pneumatic pin clamp with vanishing hook, Ø50 mm

Pneumatic pin clamp with vanishing hook, mainly designed for centering and clamping metal sheets in BIW underbody applications

- Integrated compensation up to 1,5 mm
- Irreversible
- Protection against welding debris and dust
- High repeatability
- Electronic sensor



CHARACTERISTICS

Operating temperature	5° ÷ 45° C
Min./Max. Operating pressure	0,4 / 0,6 MPa
Bore Ø	50 mm
Clamping force	3500 N
Weight (without plate, pin and hook)	3,0 kg
Pneumatic supply ports	G1/4 on both sides
Sensor	electronic (optical)
Supply voltage	10 ÷ 30 Vdc
IP code	IP 65

CODIFICATION KEY

US | T | 50 | T | 2 | 0 | - | K | 0 | | |
 1 | 2 | 3 | 4 | 5 | 6 | 7 | 8 | 9 | 10



IRREVERSIBLE



LIGHTWEIGHT



COMPENSATION



OPTICAL SENSOR



HIGH REPEATABILITY

1

SERIES
 US = UNICLAMP Pin clamp with compensation

2

VERSION
 T = Pneumatic

3

SIZE
 50 = Ø50 mm

4

MODEL
 T = With vanishing hook

5

PIN DIAMETER
 1 < = Ø19 mm
 2 = Ø20 mm
 3 = Ø25 mm
 4 = Ø30 mm
 5 = Ø35 mm
 6 = Ø40 mm
 For pin Ø outside the mentioned range, please contact our sales department

6

LOCATING PIN
 0 = Locating pin not included
 1 = Locating pin included

7

PROGRESSIVE NUMBERING
 Progressive numbers for special products are assigned by the Sales Department

8

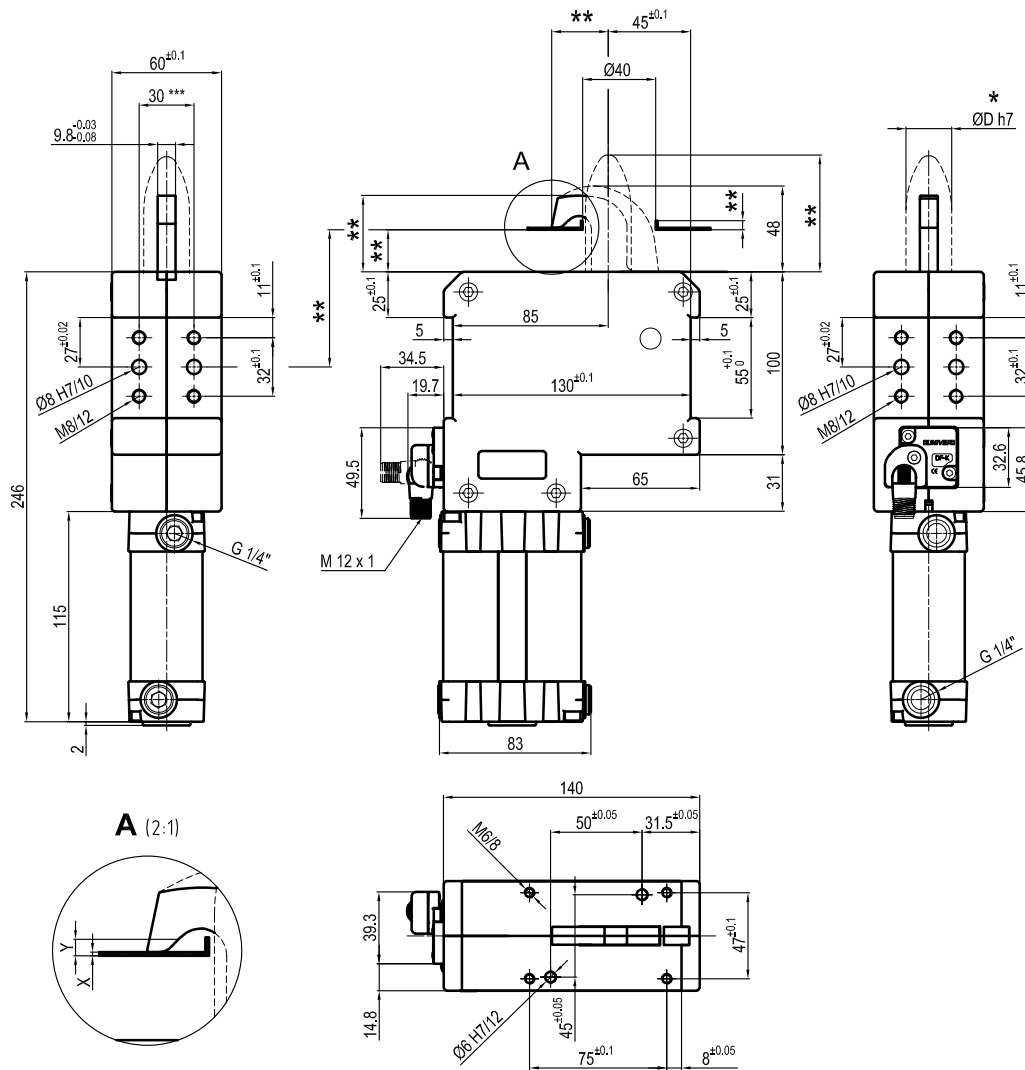
SENSOR
 N = No sensor (with protection plate)
 K = Electronic sensor PNP, M12 (DF-K)
 J = Electronic sensor NPN, optical (DF-J)
 Y = Electronic sensor PNP, M12 (DF-Y) white LED

9

PRODUCT REVISION
 Assigned by UNIVER

11

ATEX
 X = ATEX option
 See ATEX Catalogue for types and versions



6

*Pin Option	ØD
1	≤19
2	20
3	25
4	30
5	35
6	40

X = Metal sheet
 Y = Clamping range (X + 1,5 mm Max.)
 VERSION WITHOUT PIN AND HOOK AVAILABLE UPON REQUEST
 ** MISSING DIMENSIONS TO BE DEFINED ACCORDING TO CUSTOMER SPECIFICATIONS
 *** TOLERANCE BETWEEN DOWEL HOLES ± 0,02, BETWEEN SCREW HOLES ± 0,1

Sensors



Electronic (optical)

- DF-K PNP M12
- DF-J NPN M12
- DF-Y PNP M12 White LED